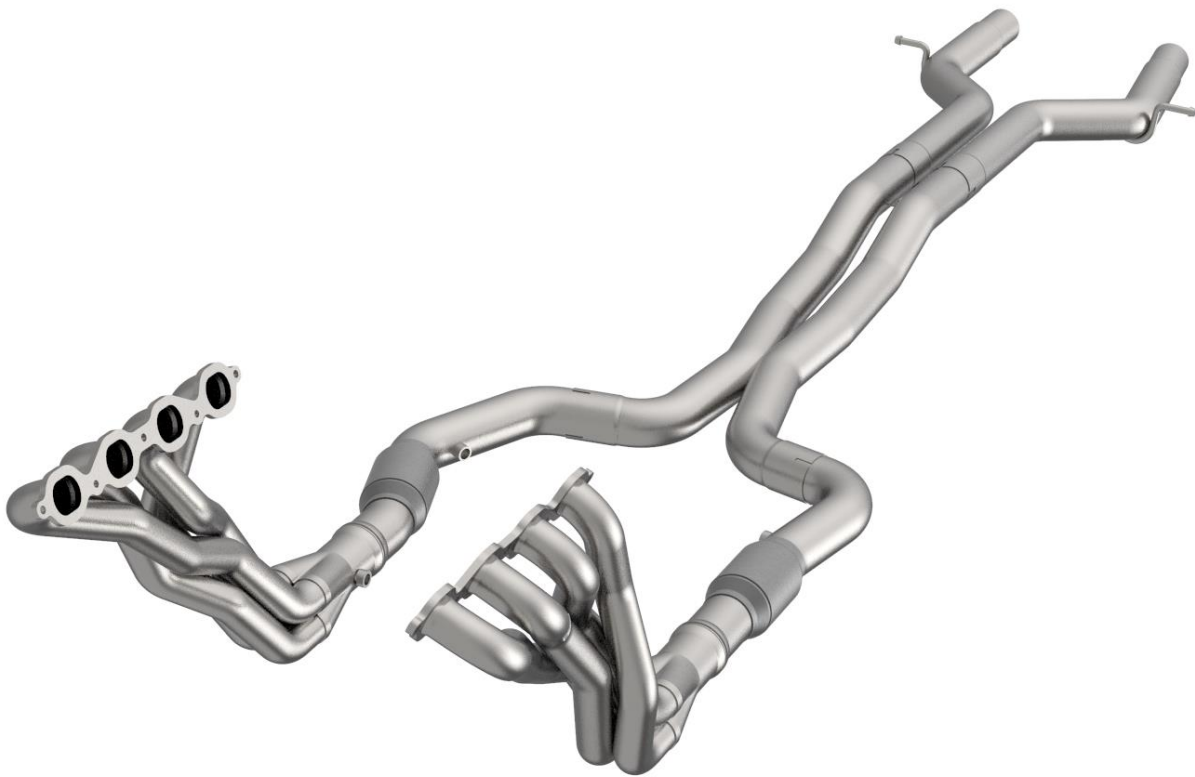




# 2022+ CADILLAC CT5-V

## Header & Exhaust Kit Installation Instructions

Catted (shown)  
Green Catted



**Thank you for your purchase, we appreciate your business.  
If additional assistance is needed, please contact Kooks Headers and Exhaust  
Toll free at 1-866-586-KOOK or contact your local dealer.**



**Do not attempt this installation if proper safety equipment isn't available to you - seek the assistance of a professional installer.**

**Read and understand all instructions before beginning.**

**To install this system, the following tools are suggested:**

- Vehicle Lift or Jack and 4 Jack Stands
- Ratchet Set ( $\frac{1}{4}$ " &  $\frac{3}{8}$ " Drive)
- Metric Socket Set ( $\frac{1}{4}$ " &  $\frac{3}{8}$ " Drive)
- Extensions ( $\frac{1}{4}$ " &  $\frac{3}{8}$ " Drive)
- Pry Bar Set
- $\frac{7}{8}$ " O2 Socket ( $\frac{7}{8}$ " Wrench)
- Gasket Scraper
- Metric Wrench Set
- Exhaust Tubing Cutter or Saw
- Standard Screwdriver Set
- Safety Glasses
- Paint Pen or Marker
- Vehicle Service Manual
- Thread Locker
- WD-40 (Penetrating Oil)
- Anti-seize
- Zip Ties

**Vehicle Preparation**

**\*\*Raise and Support Vehicle (Refer to Owner's Manual for specified jacking points) \*\***

**\*Always disconnect the battery before performing this type of work on any vehicle\***

It is recommended to spray penetrating oil on any rusted hardware before you begin



## STOCK MANIFOLD AND CATALYTIC CONVERTER REMOVAL PROCESS

### STEP 1. Battery

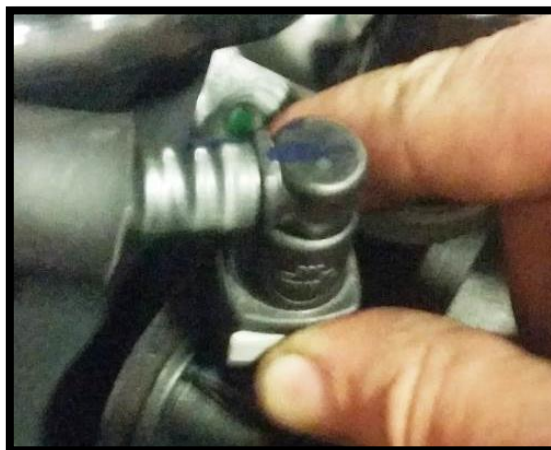
- Disconnect the negative and positive battery terminals.

### STEP 2. Engine Bay

- Remove the engine cover.
- Completely disconnect the PCV hose from the driver side valve cover.



- Using a small flathead screwdriver, pop out the retaining clip located on the valve cover vent port. The other end of the hose can be removed by squeezing the connector lock and pulling out the PCV valve.



- Disconnect spark plug wires.
- We recommend removing the spark plugs for better clearance when removing manifolds and installing Kooks headers.



### STEP 3. O2 Sensors

- Note and mark the position of each O2 sensor (left front, left rear, etc.).
- Disconnect all O2 sensors from wiring harness.
- Remove O2 sensors ( $7/8$ " wrench or O2 socket).

### STEP 4. Bottom Aluminum Shear Plate

- Remove the plate to allow access to bottom of the engine.



### STEP 5. Dip Stick Tube

- Note the routing and orientation of the dip stick tube before removal.
- Remove the retaining bolt and pull tube up and out of seating boss to remove it.



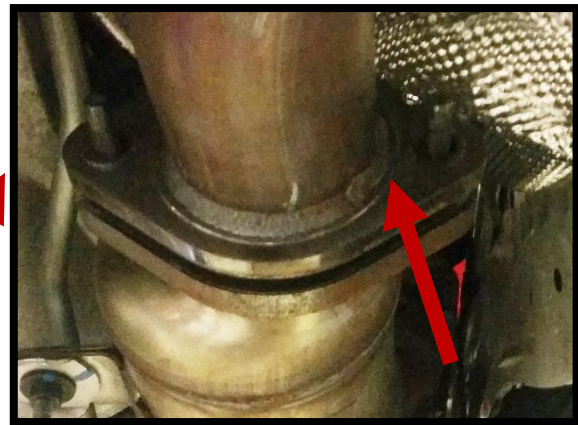


## STEP 6. Exhaust Connection Cut

- Using the visual references below, mark and cut your factory exhaust 13" from the seem edge of the muffler on both inlet tubes.



- Remove Exhaust Brace
- After making the cuts, remove the rear catalytic converters. The driver side inlet is attached with a band clamp, and the passenger side inlet is attached with a 2-bolt flange.



- Clean and deburr the cut edge on the remaining exhaust. This will ensure that the supplied barrel clamps seal correctly.

## STEP 7. Removal of Secondary Factory Catalytic converter

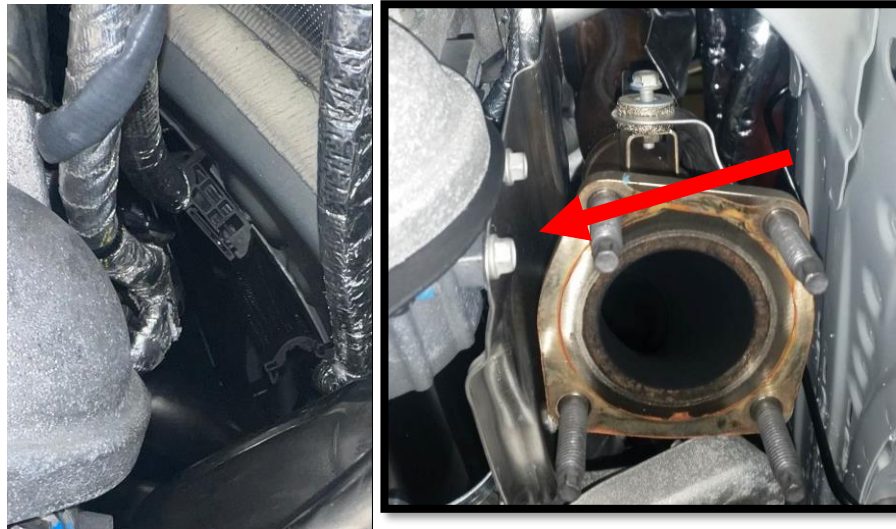
- Remove the factory catalytic converter bracket. (This will not be reused.)



- Remove the secondary catalytic converter/factory X-pipe assembly

#### STEP 8. Starter Heat Shield

- Remove the starter heat shield. (See arrow in picture below)
- Remove the brake line retainer clip from passenger firewall.



#### STEP 9. Steering Shaft

- Disconnect the steering shaft by removing the retaining bolt and move it out of the way.



#### **STEP 10. Exhaust Manifold/Catalytic Converter Assembly**

- Remove factory exhaust manifold heat shields.
- Remove factory exhaust manifolds.

### **KOOKS HEADER AND CONNECTION PIPE INSTALLATION PROCESS**

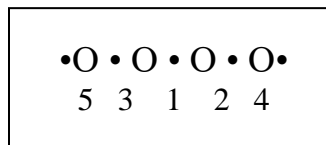
**\*\*All hardware should be tightened to factory specifications\*\***

#### **STEP 1. Cleaning.**

- Before installing your new Kooks Headers, make sure all gasket surfaces are clean and oil free.

#### **STEP 2. Kooks Header (Drivers Side)**

- Install headers from the bottom of the engine compartment
- Align one bolt through the header and supplied gasket and start in the cylinder head.
- Align header and gasket, then start remaining header bolts.
- Tighten header to factory exhaust manifold torque specs, working from the center out (see figure below)





**STEP 3. Kooks Header (Passenger Side)**

- Install headers from the bottom of the engine compartment.
- Support Header and feed dipstick tube through header between front two tubes. Reinsert into oil pan. Do not bolt into place.
- Align one bolt through the header and supplied gasket and start in the cylinder head.
- Align header and gasket, then start remaining header bolts. **Do Not Tighten.**

**STEP 4. Starter Heat Shield**

- Reinstall starter heat shield
- Carefully check wire clearance; use zip ties if needed to hold wires.

**STEP 5. Kooks Header (Passenger Side)**

- Tighten header to factory exhaust manifold torque specs following factory torque sequence.

**STEP 6. Brake Line Clip**

- Fasten brake line clip back to firewall on passenger side.

**STEP 7. Steering Shaft**

- Reinstall the lower steering shaft.

**STEP 8. Kooks Exhaust**

- Slide the Swivel Seal clamps on header collectors with the bolt heads down and to the inside; do not tighten.
- Slide the barrel clamps over the factory exhaust with bolt heads down and to the inside.
- Loosely install the connection pipes, X-pipe and rear connection pipes. **Do not forget to put band clamps on pipes before engaging slip joints.**
- Align connection pipes as shown in pictures below, noting position of O2 sensor bungs.
- Tighten system from rear to front of the vehicle.
  - Swivel Seal Clamp = 20-25 ft-lb (**DO NOT OVERTIGHTEN, IT WILL LEAK!**)
  - Band clamp = 40-45 ft-lb
- Install factory transmission cross brace

**STEP 9. O2 Sensors**

- Apply anti-seize to the threads of all O2 sensors and install them in the original locations.
- Connect the supplied O2 extensions on Drivers Side Front & Rear O2 sensors:
  - (1) 10" Driver Front Extension Wire (4-pin, BLACK CONNECTOR)
  - (1) 8" Driver Rear Extension Wire (4-pin, GREY CONNECTOR)

**STEP 10. Bottom Aluminum Shear Plate**

- Reinstall the shear plate and plastics.





**STEP 11. Spark Plugs and Spark Plug Wires**

- Reinstall spark plugs & wires.
- Reinstall the PCV hose and engine cover.

**STEP 12. Battery**

- Ensure all above steps have been completed.
- Reconnect the positive then the negative battery terminal.

**STEP 13. Inspection**

- Start engine and check for any exhaust leaks.
- Allow vehicle to complete one heat cycle (Heat to operating temp and allow for cooling).
- Re-torque header bolts and clamps.