

# CT4 Blackwing Tapout Tuning CF front Splitter installation

## Tools Needed:

- T15 Torx head
- 10mm Socket
- Car ramps/jack
- Dremel may be needed to trim bits of the splitter

## Step 1:

Raise car (*This step is not necessary but is extremely helpful in accessing all of the bolts*) as you will need to remove the (3) plastic undercarriage panels located under the engine.

These are held on by T15 Torx bolts and 10mm Bolts

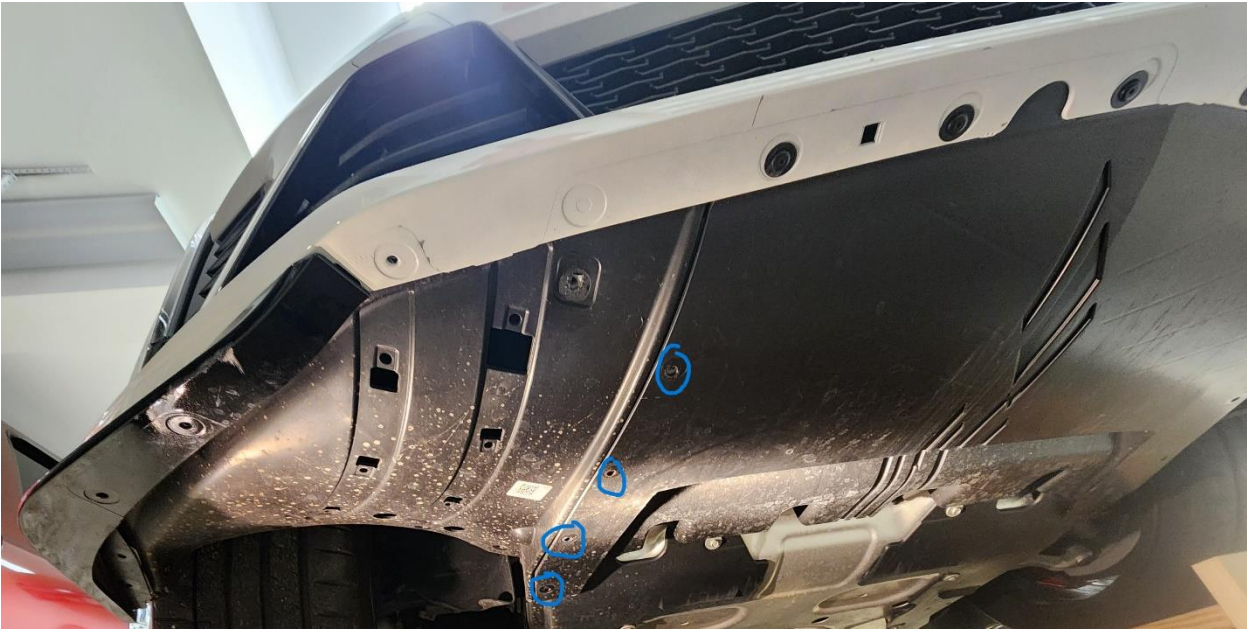


## CT4 Blackwing Tapout Tuning CF front Splitter installation

### Step 2:

Remove the (8) T15 Torx screws from the middle panel. (4) on each side

Remove the (4) 10mm bolts from the middle panel. (These are located more toward the rear of the car at the back of the middle panel)





## CT4 Blackwing Tapout Tuning CF front Splitter installation

### Step 3:

Remove the (11) T15 torx screws and (1) 10mm bolt from the passenger side panel.



### Step 4:

Repeat step 3 but on the driver side (The screws and bolts are in the same locations as the passenger side)

## CT4 Blackwing Tapout Tuning CF front Splitter installation

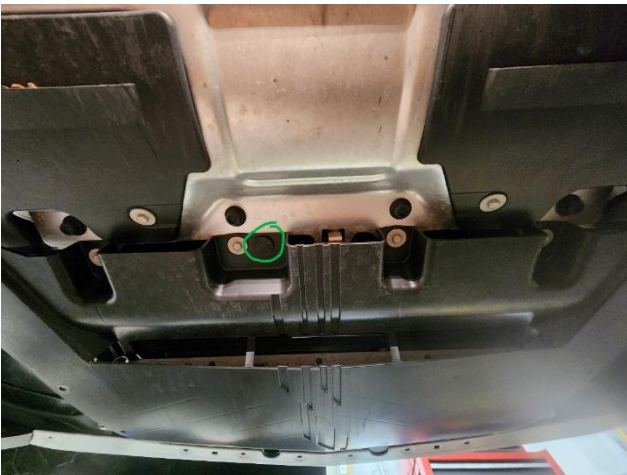
### Step 5:

Remove the (8) T15 Torx screws directly under the front bumper



### Step 6:

On the middle panel remove (1) push connector by inserting a flathead screwdriver into it and pulling it out. Located right next to the 10mm bolt previously removed.





## CT4 Blackwing Tapout Tuning CF front Splitter installation

### Step 7:

Pull the middle panel down, then slide back toward the rear of the car to remove.

Pull both of the side panels down, then slide back toward the rear of the car to remove.

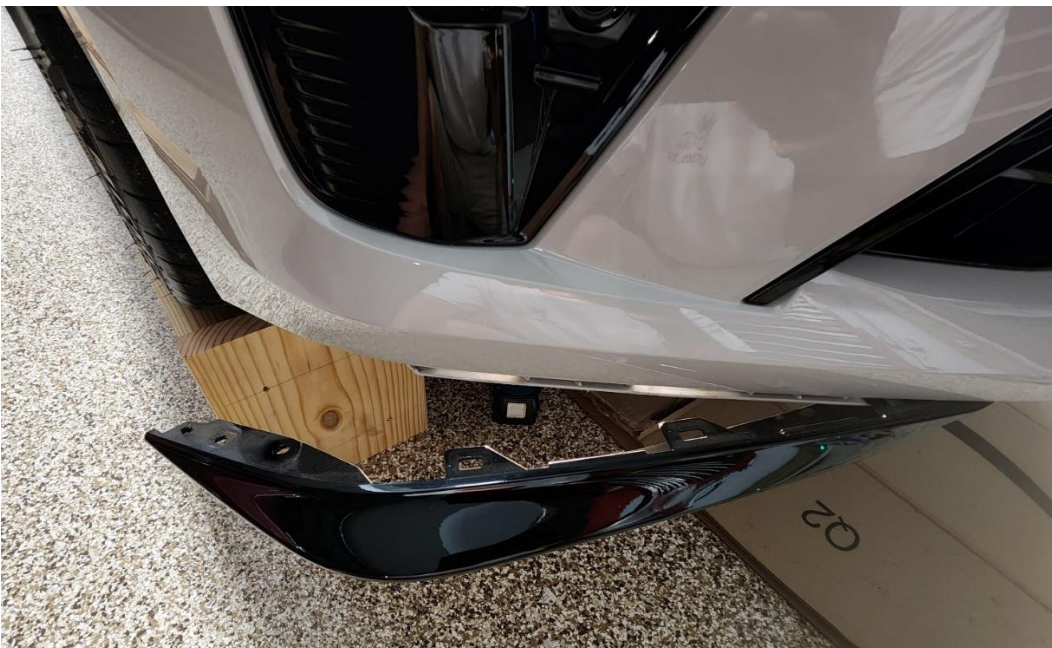
### Step 8:

Locate the (3) connectors behind each of the existing front splitters, using a flathead screw driver push the tab in and pull the connector up to remove.



### Step 9:

Rotate each of the existing front splitters toward the center of the car to remove.



## CT4 Blackwing Tapout Tuning CF front Splitter installation

### Step 10:

Insert Tapout Tuning front splitter into existing holes



*Note: In the spaces between where the new lip slides in, some non-Blackwing cars have small tabs which prevented the lip from sitting properly. Either remove the tabs from the bumper with a knife, or Dremel out a slot in the new lip to slide over these bumps.*



Once the front splitter is installed, check for proper fitment.



## CT4 Blackwing Tapout Tuning CF front Splitter installation

### Step 11:

Re-install (3) connectors on each side into the new front splitter by pushing from the top down.



### Step 12:

Slide the middle panel back into position and re-install the Push connector to hold it in place. *Note: the plastic panel sits above the painted bumper*



## CT4 Blackwing Tapout Tuning CF front Splitter installation

### Step 13:

Slide each side panel into the slot of the new front splitter (where the **Connectors** are located) then rotate the panels inward toward the middle panel. *Note: the side panels sit behind the middle panel*



### Step 14:

Visually align all holes, then hand tighten all **T15 Torx** screws into place. Once all Torx screws are installed, Install the **(6) 10mm Bolts** and tighten. Go back and tighten all Torx screws.

*Note: There are some additional holes in the new CF splitter will not get a Torx*





Enjoy!