



2022+ Cadillac
CT5-V Blackwing 6.2L
CT4-V Blackwing 3.6L
2020+ CT5-V 3.0L Turbo



IMPORTANT! WARRANTY AND INSTALLATION INSTRUCTIONS

Please Forward All Information to Consumer

Be sure to review the enclosed instructions prior to beginning the installation process. If you have any questions about the enclosed parts or instructions, or if you encounter a problem during installation:

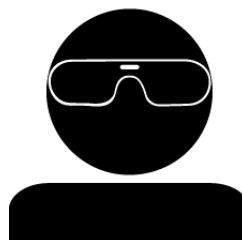
CALL TECHNICAL SUPPORT: 440.891.0999 or 800.486.0999

**TO ACTIVATE YOUR WARRANTY GO TO:
[CORSAPERFORMANCE.COM/WARRANTY](https://corsaperformance.com/warranty)**

COLOR INSTRUCTIONS ARE AVAILABLE BY PART NUMBER ON: [CORSAPERFORMANCE.COM](https://corsaperformance.com)



NEVER work on a hot exhaust system.
Allow time for the vehicle to cool.



**Always wear eye protection
when working under a vehicle.**

INSTALL DIFFICULTY



RECOMMENDED TOOLS & SUPPLIES

- 3/8" Drive Ratchet
- 3/8" Drive 13mm Socket
- 3/8" Drive Swivel Joint Extension (U-Joint)
- 3/8" Drive Long Extension (10")
- Chain Style Pipe Cutter
- Grommet Pullers
- Soap and Water Solution
- Small Flat Head Screwdriver
- Needle Nose Pliers (Removing Rivet)
- Scissors (Side Panel Trim)
- Ruler or Straight Edge (Side Panel Trim)
- 3/8" Drive 10mm Deep Socket
- 3/8" Drive 15mm Deep Socket
- 3/8" Drive 15mm Shallow Socket
- Tape Measure & Permanent Marker
- File (De-burring Cut Pipe)
- Torque Wrench Capable of 45ft-lbs (61Nm)
- Penetrating Lubricant Spray
- T15 Torx Screwdriver
- Punch (Removing Rivet)
- Masking Tape (Side Panel Trim)
- Utility Knife (Side Panel Trim)

Please take time to read and understand these installation instructions.

CORSA recommends that the installation of this system be performed by a qualified service center or professional installer who has the necessary equipment, tools, and experienced personnel. However, if you decide to perform this installation yourself, the use of an additional person may be required.

WARNING: Never work on a hot exhaust system. Allow time for the vehicle to cool. Always wear eye protection when working under a vehicle.

CORSA Performance makes no representation or warranty, expressed or implied that its downpipe or header products and or components there-in comply with federal, state or local emission levels, noise levels, or safety standards or that any of their parts conform with the racing vehicles exemption, unless otherwise noted. The purchaser assumes all responsibility for such use and compliance.

This warranty does not extend to damaged or defect in the finish of a product or to any product, that in the opinion of CORSA Performance, has been misused, damaged by accident or negligence, altered or modified in any way, faulty installation or installed contrary to CORSA installation instructions, or repaired by an unauthorized service facility.

Full warranty available on www.corsaperformance.com

2020+ CADILLAC CT4/5-V INCL. BW 3.0L/3.6L/6.2L

3.0" Double X-Pipe Tunnel Section (Box 1 of Cat Back)

CT4-V BW Part #: 21318; Box 1 of Cat Back Part #: 21317 (Incl. CF, BLK, CFBLK)

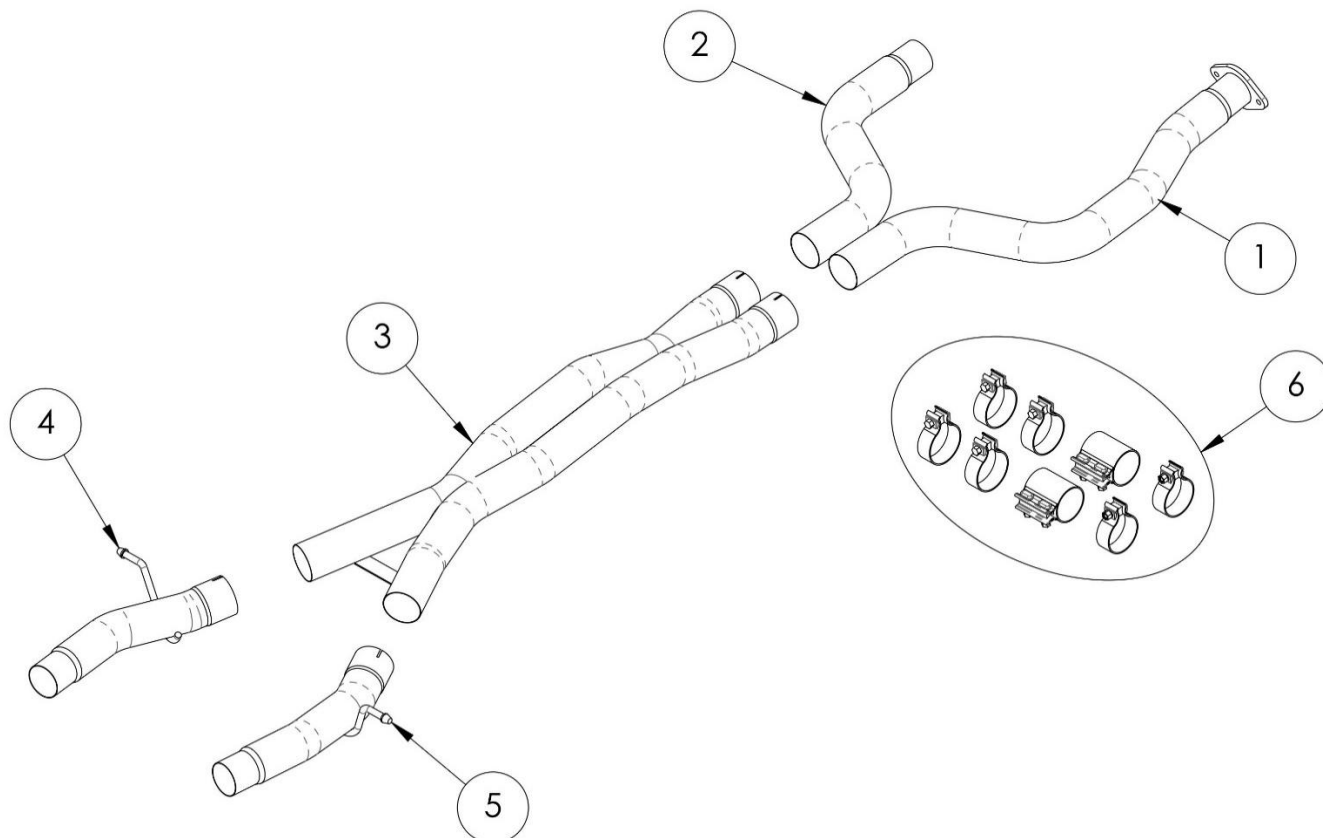
CT5-V BW Part #: 21321; Box 1 of Cat Back Part #: 21320 (Incl. CF, BLK, CFBLK)

CT5-V (NON-BW) Part #: 21324; Box 1 of Cat Back Part #: 21323, 21326 (Incl. CF, BLK, CFBLK)

CORSA
PERFORMANCE

Please confirm that all parts are present according to the bill of materials before beginning the installation.

If something is missing call Tech Support at 440.891.0999 or Toll Free: 1.800.486.0999



21318 - CT4-V BW BILL OF MATERIALS DOUBLE X-PIPE TUNNEL SECTION

1.	Passenger Head Pipe Assembly (15CV4110)	2.	Driver Head Pipe (15CV4111)
3.	Double X-Pipe Assembly (15CV4089)	4.	Driver Axle Pipe Assembly (15CV4091)
5.	Passenger Axle Pipe Assembly (15CV4092)	6.	Hardware Kit (16CM7009)

2020+ CADILLAC CT4/5-V INCL. BW 3.0L/3.6L/6.2L

3.0" Double X-Pipe Tunnel Section (Box 1 of Cat Back)

CT4-V BW Part #: 21318; Box 1 of Cat Back Part #: 21317 (Incl. CF, BLK, CFBLK)

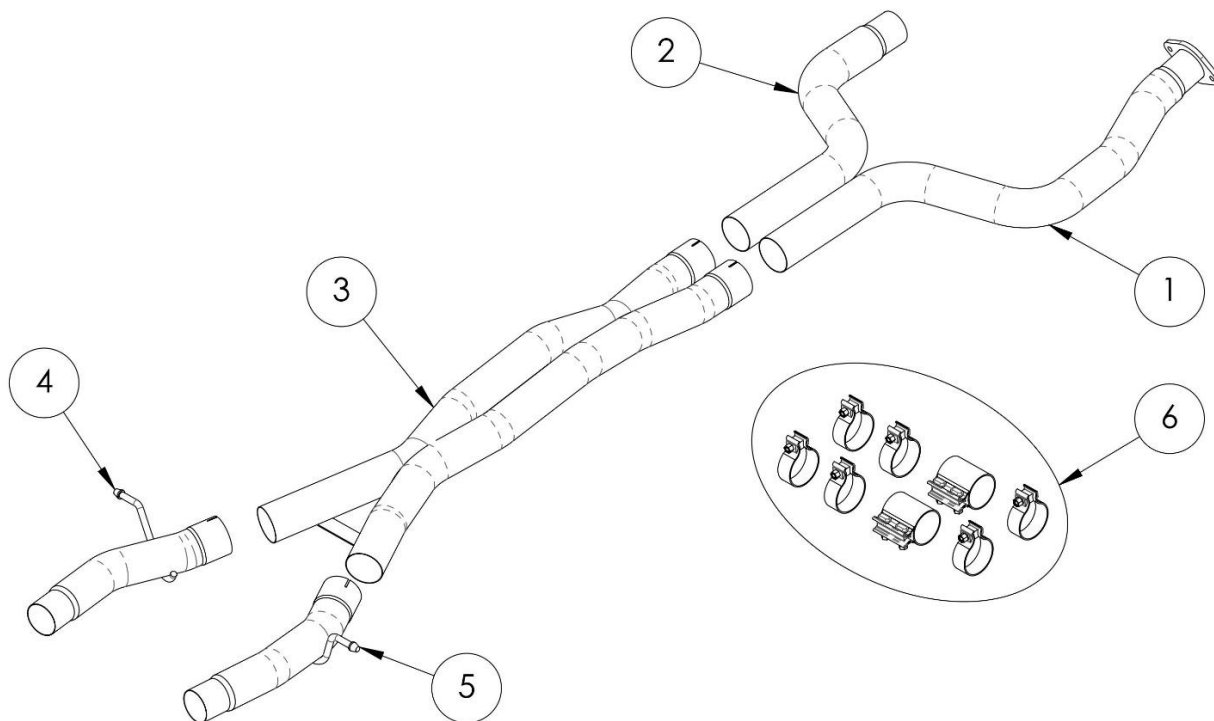
CT5-V BW Part #: 21321; Box 1 of Cat Back Part #: 21320 (Incl. CF, BLK, CFBLK)

CT5-V (NON-BW) Part #: 21324; Box 1 of Cat Back Part #: 21323, 21326 (Incl. CF, BLK, CFBLK)

CORSA
PERFORMANCE

Please confirm that all parts are present according to the bill of materials before beginning the installation.

If something is missing call Tech Support at 440.891.0999 or Toll Free: 1.800.486.0999



21321 - CT5-V BW BILL OF MATERIALS DOUBLE X-PIPE TUNNEL SECTION

1.	Passenger Head Pipe Assembly (15CV4086)	2.	Driver Head Pipe (15CV4087)
3.	Double X-Pipe Assembly (15CV4089)	4.	Driver Axle Pipe Assembly (15CV4091)
5.	Passenger Axle Pipe Assembly (15CV4092)	6.	Hardware Kit (16CM7009)

2020+ CADILLAC CT4/5-V INCL. BW 3.0L/3.6L/6.2L

3.0" Double X-Pipe Tunnel Section (Box 1 of Cat Back)

CT4-V BW Part #: 21318; Box 1 of Cat Back Part #: 21317 (Incl. CF, BLK, CFBLK)

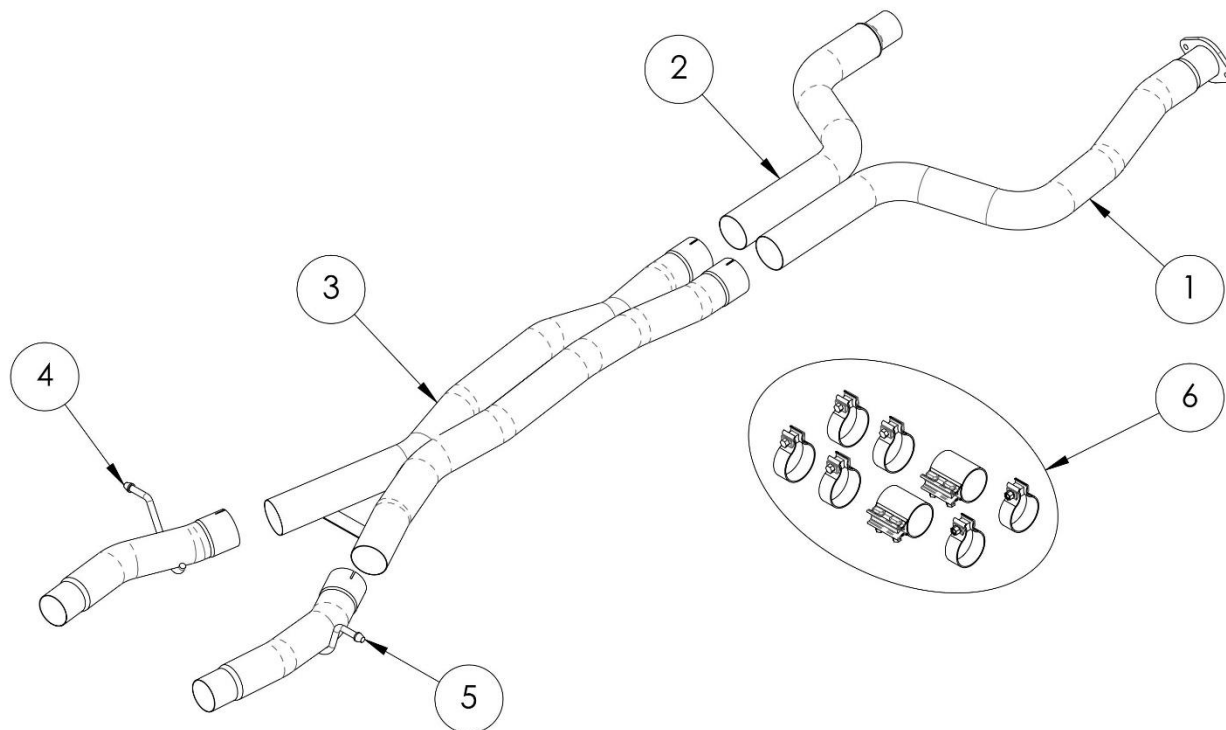
CT5-V BW Part #: 21321; Box 1 of Cat Back Part #: 21320 (Incl. CF, BLK, CFBLK)

CT5-V (NON-BW) Part #: 21324; Box 1 of Cat Back Part #: 21323, 21326 (Incl. CF, BLK, CFBLK)

CORSA
PERFORMANCE

Please confirm that all parts are present according to the bill of materials before beginning the installation.

If something is missing call Tech Support at 440.891.0999 or Toll Free: 1.800.486.0999



21324 - CT5-V (NON-BW) BILL OF MATERIALS DOUBLE X-PIPE TUNNEL SECTION

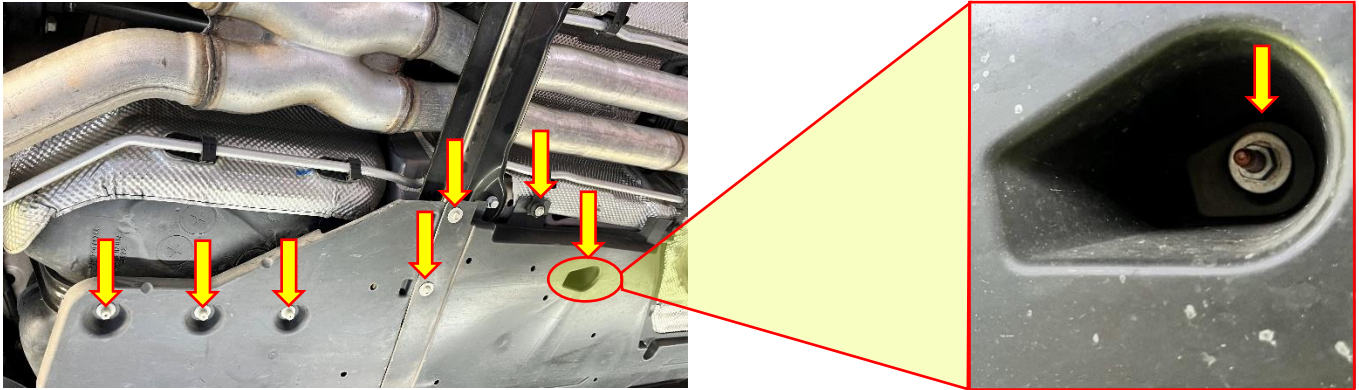
1.	Passenger Head Pipe Assembly (15CV4114)	2.	Driver Head Pipe (15CV4113)
3.	Double X-Pipe Assembly (15CV4089)	4.	Driver Axle Pipe Assembly (15CV4091)
5.	Passenger Axle Pipe Assembly (15CV4092)	6.	Hardware Kit (16CM7009)

CAUTION: Never work on a hot exhaust system. Allow the vehicle to cool for at least an hour and a half. Always wear eye protection when working under a vehicle. It is recommended to use cotton gloves to protect stainless steel surfaces from permanent grease and oil stains.

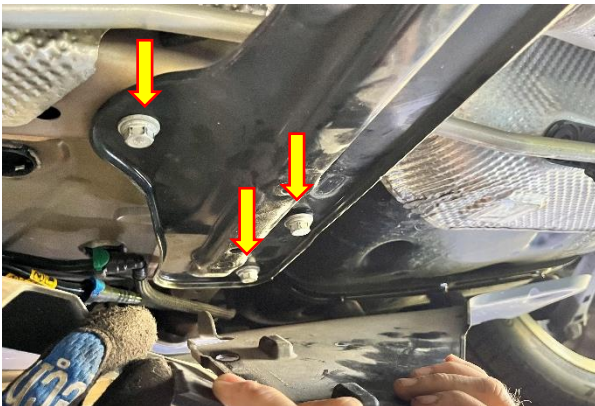
REMOVAL INSTRUCTIONS

FACTORY EXHAUST

NOTE: Begin with **REMOVAL STEPS 1-2**, then skip to **REMOVAL STEP 6** for the CT4-V Blackwing. Begin at **REMOVAL STEP 3** for the CT5-V Blackwing & Non-Blackwing. Continue with **REMOVAL STEP 6** for **ALL VERSIONS** of the CORSA exhaust installation.



1. To access the center Cross Member, remove the 14 bolts (7 per side) securing the plastic underside panels over the ends of the Cross Member with a 3/8" drive ratchet and 10mm socket. Note that two of the fasteners (1 per side) are in a recessed pocket, and two more of the fasteners (1 per side) secure the oil cooler lines along with the underside paneling.



2. Remove the 6 bolts (3 per side) securing the Cross Member to the chassis using a 3/8" drive ratchet and 13mm socket, then move the plastic underside panels down and slide the center Cross Member out from above the paneling, to allow the Cross Member to be removed from the vehicle.

Set aside the Cross Member and all fasteners from REMOVAL STEPS 1 & 2 in a protected location to be reused in INSTALL STEP 15.

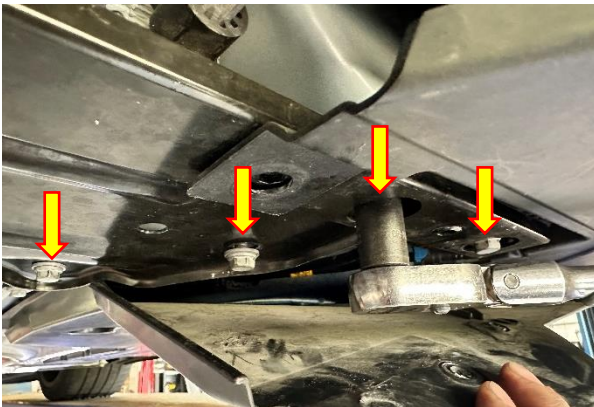
Continued on Next Page ...

REMOVAL INSTRUCTIONS

FACTORY EXHAUST



3. To access the center Cross Member, remove the 8 bolts (4 per side) securing the plastic underside panels over the ends of the Cross Member with a 3/8" drive ratchet and 10mm socket. Note the two inner bolts have a large integrated washer, and the remaining 6 outer bolts have a small integrated washer.



4. Remove the 8 bolts (4 per side) securing the Cross Member to the chassis using a 3/8" drive ratchet and 13mm socket.



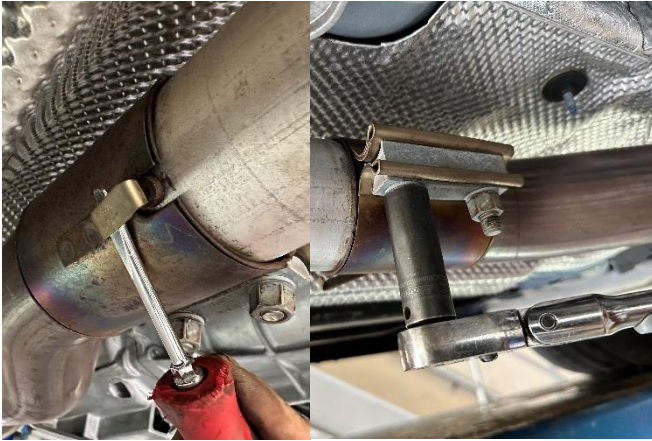
5. Move the plastic underside panels down and slide the center Cross Member out from above the paneling, to allow the Cross Member to be removed from the vehicle.

Set aside the Cross Member and all fasteners from REMOVAL STEPS 3 & 4 in a protected location to be reused in INSTALL STEP 15.

Continued on Next Page ...

REMOVAL INSTRUCTIONS

FACTORY EXHAUST



- 6.** Use a flat head screwdriver to pry open the locking tab on the driver sleeve clamp, located just aft of the driver side exhaust catalyst. Next, use a 3/8" drive ratchet and 15mm deep socket to loosen both nuts on the sleeve clamp as shown.

NOTE: Both nuts must be loosened for the sleeve clamp to fully disengage.



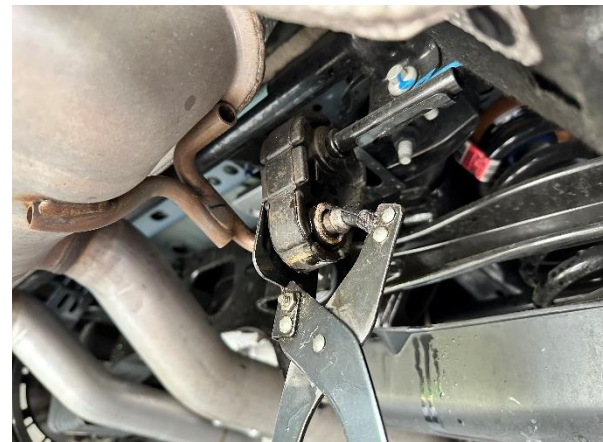
- 8.** Remove the driver and passenger side axle pipe hangers (located in front of the rear suspension) from the factory grommets using grommet pullers or a similar device.

NOTE: The use of a soap and water solution may aid in the removal of hangers from the grommets.



- 7.** Remove both nuts at the passenger side flange connection, located just behind the passenger side exhaust catalyst, using a 3/8" drive ratchet and 15mm deep socket.

Set aside the nuts in a protected location to be reused in INSTALL STEP 1.



- 9.** Remove the driver and passenger side front muffler hangers (located behind the rear suspension) from the factory grommets using grommet pullers or a similar device.

Continued on Next Page ...

REMOVAL INSTRUCTIONS

FACTORY EXHAUST

NOTE: Continue with **REMOVAL STEPS 10-13**, then skip to the **NOTE SECTION ON PAGE 14** for the CT4-V and CT5-V Blackwing (OEM Tips on Exhaust). Begin at **REMOVAL STEP 14** for **ONLY** the CT5-V Non-Blackwing (OEM Bezel Tips).



- 10.** Unplug the wiring harness from the exhaust valve actuators located on the inner most driver and passenger tip pipes. To release the plug, slide the white locking clip away from the actuator, press down on the clip and slide the plug away from the actuator.



- 11.** Both the driver and passenger side valve wiring harness connections should now be disconnected and hanging clear of the stock rear mufflers.



NOTE: An additional helper (or two) is highly recommended for **REMOVAL STEPS 12-13**. The rear fascia must be pulled away from the exhaust for the valve actuators to clear during exhaust removal.

- 12.** Use a 3/8" drive ratchet, 15mm shallow socket, swivel joint, and long extension to remove both nuts securing each of the driver and passenger side rear hanger grommet assemblies. **Set aside the fasteners in a protected location to be reused during REMOVAL STEP 30 (Tunnel Section Only) or during the full cat back exhaust installation (INS5396).**



- 13.** Push up slightly on the exhaust tip pipes, then slide the rear hanger grommet assemblies rearward to free them from the studs in the chassis. Next, slide the entire stock exhaust assembly rearward until the stock flange and sleeve clamp are free from the exhaust catalyst pipes. Lower the front of the exhaust, then slide it forwards to allow the rear muffler, tips, and valve actuators to move forward and down to clear the rear fascia while **CAREFULLY** removing the exhaust from the vehicle.

Continued on Next Page ...

REMOVAL INSTRUCTIONS

FACTORY EXHAUST



- 14.** Remove the 6 screws (3 per side) securing the Side under paneling to the exhaust heat shielding using a T15 Torx Screwdriver.

Set aside the screws in a protected location to be reused during REMOVAL STEP 30 (Tunnel Section Only) or during the full cat back exhaust installation (INS5396).



NOTE: An additional helper (or two) is highly recommended for **REMOVAL STEPS 15-16**. The rear fascia must be pulled away from the exhaust for the valve actuators to clear during exhaust removal.

- 15.** Unplug the wiring harness from the exhaust valve actuators located on the innermost driver and passenger tip pipes. To release the plug, slide the white locking clip away from the actuator, press down on the clip and slide the plug away from the actuator. This step must be done while removing the factory exhaust from the vehicle.



- 16.** Slide the entire stock exhaust assembly rearward until the stock flange and sleeve clamp are free from the exhaust catalyst pipes. Lower the front of the exhaust, then slide it forwards to allow the rear muffler, valve actuators, and rear muffler hangers to move forward and down to clear the rear fascia while **CAREFULLY** removing the exhaust from the vehicle.



Continued on Next Page ...

REMOVAL INSTRUCTIONS

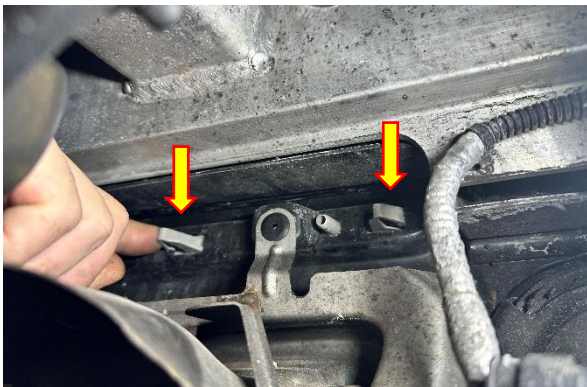
FACTORY EXHAUST

IMPORTANT NOTE:

- A. Skip to the **NOTE SECTION ON PAGE 14** for the **CORSA BEZEL DUMP VERSIONS** of the CORSA exhaust installation for the **CT5-V Non-Blackwing**. **DO NOT REMOVE** the **FACTORY BEZEL TIP** if installing **ONLY** the **21324 CORSA TUNNEL SECTION** or if installing the **21323/21325 CORSA BEZEL DUMP CAT BACK/AXLE BACK** exhaust.

OR

- B. Continue with **REMOVAL STEPS 17-25** for the **OPTIONAL FACTORY BEZEL TIP REMOVAL** for the **CT5-V Non-Blackwing ONLY**. This process is **ONLY** necessary when converting from **FACTORY BEZEL TIPS** to one of the **FULL TIP VERSIONS** of the **21322/21326 CORSA AXLE BACK/CAT BACK** exhaust.



- 17. CAREFULLY** remove the two reflectors on each side of the vehicle to enable access to the four rivets (2 per side) securing the top of the OEM Bezel Tips to the rear fascia. Each Reflector is snapped in place using two tabs, which can be pushed out from inside the fascia.



- 18.** Use a pair of needle nose pliers to twist off and remove the three metal ears on each of the two driver side rivets. Next, use a punch to push the center of each rivet through the mounting holes in the rear fascia to remove the rivets.



- 19.** Remove the screw securing the lower inside position of the driver side OEM Bezel Tip to the rear fascia using a T15 Torx Screwdriver. Note that this screw will not be reused.

Continued on Next Page ...

REMOVAL INSTRUCTIONS

FACTORY EXHAUST



- 20. CAREFULLY** remove the driver side OEM Bezel Tip from the rear fascia as shown.

Repeat **REMOVAL STEPS 18-20** on the passenger side of the vehicle.



- 21.** Use a 3/8" drive ratchet and 15mm socket to remove both nuts securing each of the driver and passenger side rear hanger grommet assemblies. **Set aside the fasteners in a protected location to be reused during the full cat back exhaust installation (INS5396).**



- 22.** Locate the supplied driver and passenger side under panel cutting templates in the back of the **INS5396 CORSA AXLE BACK** instructions. Use a pair of scissors to cut out the templates, and clip or tape the cutting templates as shown to the side under panels, just below the outer tip position as shown. The edges of the cutting template will align with the edges of the side under panels. Run a piece of masking tape underneath the entire cutting edge of each cutting template and then mark the **CUT LINE** as shown.

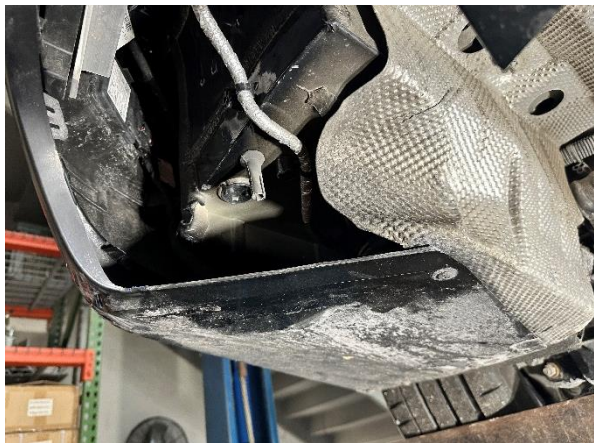
NOTE: The hole position in the cutting template will align to the corresponding hole in the side under panel when the position of the cutting template is correct.

- 23.** Remove the cutting templates from the side under panels. Next, using a straight edge and a utility knife, cut the side under panels as shown along the **CUT LINE**. Make sure to lightly score the panel at first and gradually cut through the panel in multiple passes.

Continued on Next Page ...

REMOVAL INSTRUCTIONS

FACTORY EXHAUST



- 24.** The edge of the cut should make a clean transition to the edge of the tip cutout in the rear fascia and should align with the exhaust heat shielding as shown.



- 25. CAREFULLY** align and reinstall the two reflectors on each side of the vehicle by snapping the two mounting tabs in place.

Continued on Next Page . . .

REMOVAL INSTRUCTIONS

FACTORY EXHAUST

IMPORTANT NOTE:

- C. Skip to **STEP 1 OF THE INSTALLATION SECTION OF THE CORSA DOUBLE X-PIPE TUNNEL INSTRUCTIONS (Page 16 of this document)** if installing the full **21317/21320/21323/21326 CORSA CAT BACK** exhaust system for the CT4/5-V Blackwing and CT5-V Non-Blackwing.

OR

- D. Continue with **REMOVAL STEPS 26-31** if installing **ONLY** the **21318/21321/21324 CORSA DOUBLE X-PIPE TUNNEL SECTION** of the exhaust system with the **FACTORY REAR MUFFLER**.



- 26.** On the factory exhaust, measure 12" rearwards (towards the factory muffler) from the rearward edge of the passenger side axle pipe hanger bracket as shown, following the outside profile of the exhaust pipe, to mark the **CUT LINE**.



- 27.** Measure 13.5" rearwards (towards the factory muffler) from the rearward edge of the driver side axle pipe hanger bracket as shown, following the outside profile of the exhaust pipe, to mark the **CUT LINE**.



- 28.** Using a chain cutter or similar device, cut both the driver and passenger side exhaust pipes at the marked locations.



- 29.** Thoroughly deburr both cut edges of the **FACTORY REAR MUFFLER** exhaust section.

Continued on Next Page ...

REMOVAL INSTRUCTIONS

FACTORY EXHAUST



- 30.** Reinstall the **FACTORY REAR MUFFLER** exhaust section into the vehicle. Installation is the reverse of **REMOVAL STEPS 9-13** (CT4/5-V Blackwing) or **REMOVAL STEPS 9, 14-16** (CT5-V Non-Blackwing)



- 31.** Locate the two supplied sleeve clamps from the hardware kit. Slide both sleeve clamps onto the cut location of the **FACTORY REAR MUFFLER**, with the nuts on the sleeve clamps facing towards the center of the vehicle as shown. Slide the sleeve clamps onto the pipes as far as possible; this will allow room for the installation of the CORSA double X-pipe tunnel section.

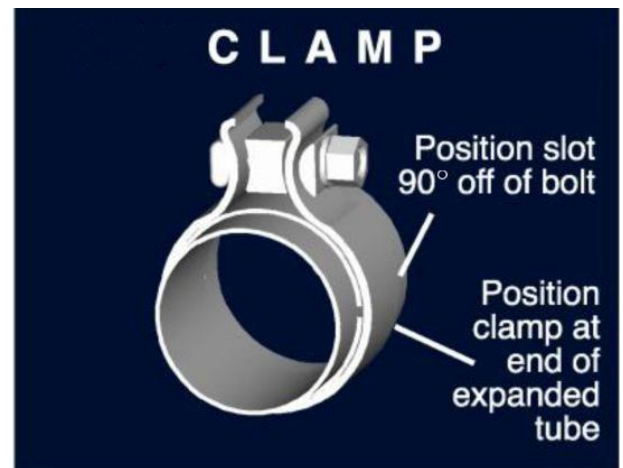
Step 31 concludes the removal of the factory exhaust.

WARNING! DO NOT SKIP THIS STEP!

It is recommended to apply anti-seize lubricant to the threads **ONLY** of all the clamps and flange bolts. Failure to follow this procedure can cause nuts to seize on clamps and potentially destroy threads.

After applying anti-seize lubricant, be sure to **thoroughly** clean your hands, as lubricant will tarnish stainless steel.

All clamps should be tightened using a properly calibrated Torque Wrench. Using an air impact gun will damage the clamp and reduce its ability to effectively seal the joint. It may also cause the joint to separate, thereby causing damage to your exhaust system and to your vehicle.



NOTE: Align all clamps so that the center of the clamp bolt is 90 degrees from the notch in the pipe.

INSTALLATION INSTRUCTIONS

CORSA EXHAUST



1. Locate the passenger side head pipe assembly and the two nuts set aside during **REMOVAL STEP 7**. Slide the flange onto the studs from the passenger side catalyst as shown.



2. Secure the head pipe with the factory mounting nuts at the passenger side head pipe flange connection using a ratchet and 15mm deep socket, until the head pipe is snugly held in place. Leave the flange connection loose enough for adjustment.



3. Locate the driver side head pipe. Fully insert the head pipe into the factory driver sleeve clamp as shown. Secure the head pipe with the sleeve clamp nuts using a ratchet and 15mm deep socket, until the head pipe is snugly held in place. Leave the clamp connection loose enough for adjustment.



Continued on Next Page . . .

INSTALLATION INSTRUCTIONS

CORSA EXHAUST



- 4.** Locate the double X-pipe assembly and two 3.0" clamps. Slide a clamp over the inlet of each of the front legs of the X-pipe, so that the nuts will be located on the outside of the X-pipe and facing downwards.



- 5.** Position the X-Pipe so the cross brace located at the rear of the X-Pipe is facing CORSA logo side down and parallel with the ground, and the X-pipe outlets are centered around the rear differential. Slide each of the X-pipe inlet legs onto the two head pipe outlet ends, with a recommended pipe overlap of 1.75 inches.



- 6.** Secure the X-pipe using a ratchet and 15mm deep socket, until the X-Pipe is snug on both head pipe outlet ends. Make sure the clamp nuts and studs are vertical while snugging the clamps. Place a jack stand or similar device under the rear of the X-Pipe for support. Leave the clamp connections loose enough for adjustment.

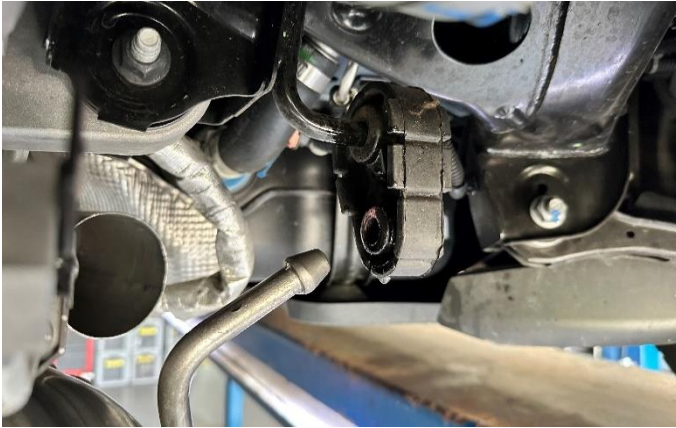


- 7.** Locate the passenger side axle pipe assembly and a 3.0" clamp. Slide a clamp over the inlet of the passenger axle pipe, so that the nut will be located on the inside of the axle pipe and facing downwards.

Continued on Next Page ...

INSTALLATION INSTRUCTIONS

CORSA EXHAUST



- 8.** Slide the axle pipe hanger into the corresponding grommet as shown.

NOTE: The use of a soap and water solution may aid in the installation of hanger grommets.



- 9.** Slide the passenger axle pipe assembly onto the passenger x-pipe outlet, with a recommended pipe overlap of 1.75 inches. Rotate the axle pipe until the hanger is horizontal as it runs through the stock grommet.



- 10.** Locate the driver side axle pipe assembly and a 3.0" clamp. Repeat **INSTALL STEPS 7-9** on the driver side of the vehicle.



- 11.** Secure both axle pipes using a ratchet and 15mm deep socket, until the axle pipes are snug on both X-Pipe outlet ends. Leave the clamp connections loose enough for adjustment.

NOTE:

- A.** Continue with **INSTALL STEPS 12-15** if installing only the Double X-Pipe tunnel section of the CORSA exhaust system with the **FACTORY REAR MUFFLER** section.

OR

- B.** Continue with **STEP 1 OF THE INSTALLATION SECTION OF THE CORSA AXLE BACK INSTRUCTIONS (INS5396)** if installing the full CORSA Cat Back exhaust system for the CT4/5-V Blackwing and CT5-V Non-Blackwing.

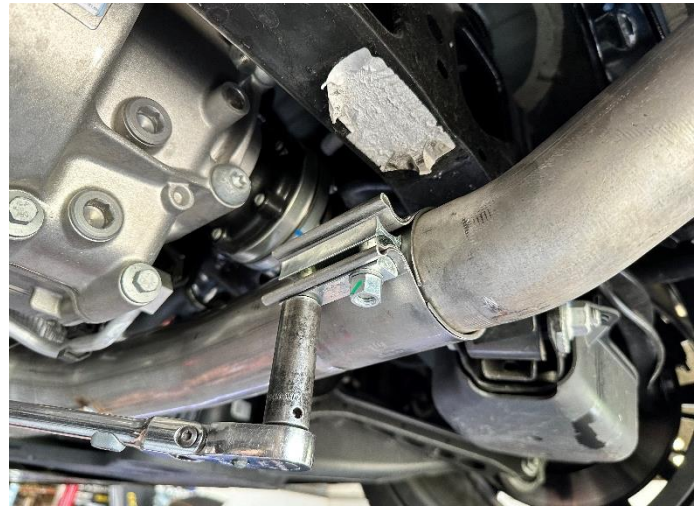
Continued on Next Page ...

INSTALLATION INSTRUCTIONS

CORSA EXHAUST



- 12.** Align the outlet ends of both axle pipes with both inlets of the **FACTORY REAR MUFFLER** section. Move the muffler section forward until the pipes are touching against both axle pipes, then position both sleeve clamps to center on the split between the pipes as shown.



- 13.** Secure the **FACTORY REAR MUFFLER** section with both sets of sleeve clamp nuts using a ratchet and 15mm deep socket, until the muffler section is snugly held in place. Leave the clamp connections loose enough for adjustment.



- 14.** Adjust the system, including both head pipe connections, the x-pipe and axle pipe depth and rotation, and the **FACTORY REAR MUFFLER** depth and rotation, so that the factory tips are centered in the bumper valence. Check the position of all hangers to make sure they are properly seated within their corresponding grommets. Check clearances between the system components and chassis. If necessary, the heat shielding above the exhaust can be shaped to create additional clearances to the head pipes just behind the transmission cradle. At this time, start at the front of the vehicle, and tighten all flange hardware and clamps to 45ft-lbs using the torque wrench and 15mm socket.

Continued on Next Page ...

INSTALLATION INSTRUCTIONS

CORSA EXHAUST



- 15.** Locate the cross member and all fasteners set aside in **REMOVAL STEPS 1-2 (CT4-V BW ONLY)** or **REMOVAL STEPS 3-5 (CT5-V BW/NON-BW ONLY)** of the stock exhaust removal process. Reinstall the cross member and plastic underside paneling. Installation is reverse of removal. Installation Complete. This concludes the installation of your CORSA Performance exhaust system.

NOTE: During cold weather start-ups, you may experience an exhaust sound that is deeper and louder in tone than usual. This is temporary and will diminish to normal levels once your engine has reached its normal operating temperature.

NOTE: Immediately following the installation of your exhaust system, you may experience a trace of smoke after initial start-up. DO NOT be alarmed. The smoke is caused by the burning of a small amount of forming oil residue used in the manufacturing process.

NOTE: It is strongly suggested that all clamps be checked and tightened after road testing the vehicle once the system has cooled.