



2022+ Cadillac
CT5-V Blackwing 6.2L
CT4-V Blackwing 3.6L
2020+ CT5-V 3.0L Turbo



INS5428.docx



IMPORTANT! WARRANTY AND INSTALLATION INSTRUCTIONS

Please Forward All Information to Consumer

Be sure to review the enclosed instructions prior to beginning the installation process. If you have any questions about the enclosed parts or instructions, or if you encounter a problem during installation:

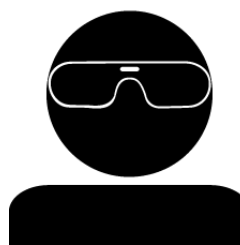
CALL TECHNICAL SUPPORT: 440.891.0999 or 800.486.0999

**TO ACTIVATE YOUR WARRANTY GO TO:
[CORSAPERFORMANCE.COM/WARRANTY](https://corsaperformance.com/warranty)**

COLOR INSTRUCTIONS ARE AVAILABLE BY PART NUMBER ON: [CORSAPERFORMANCE.COM](https://corsaperformance.com)



NEVER work on a hot exhaust system.
Allow time for the vehicle to cool.



**Always wear eye protection
when working under a vehicle.**

INSTALL DIFFICULTY



2020+ CADILLAC CT4/5-V INCL. BW 3.0L/3.6L/6.2L

3.0" Axle Back Exhaust, Dual Exit w/ Twin 4.5" S.S. Tips/4.5" Carbon Tips (Box 2 of Cat Back)

CT4-V Part #: 21319 (Incl. CF, BLK, CFBLK); Box 2 of Cat Back Part #: 21317 (Incl. CF, BLK, CFBLK)

CT5-V Part #: 21322 (Incl. CF, BLK, CFBLK); Box 2 of Cat Back Part #: 21320 (Incl. CF, BLK, CFBLK)

CT5-V (NON-BW) Part #: 21325 (BZL Dump), or 21322; Box 2 of Cat Back Part #: 21323 or 21326 (Incl. CF, BLK,



RECOMMENDED TOOLS & SUPPLIES

- 3/8" Drive Ratchet
- 3/8" Drive 13mm Socket
- 3/8" Drive Swivel Joint Extension (U-Joint)
- 3/8" Drive Long Extension (10")
- Chain Style Pipe Cutter
- Grommet Pullers
- Soap and Water Solution
- Small Flat Head Screwdriver
- 1/2" Wrench
- Needle Nose Pliers (Removing Rivet)
- Scissors (Side Panel Trim)
- Ruler or Straight Edge (Side Panel Trim)
- 3/8" Drive 10mm Socket
- 3/8" Drive 15mm Deep Socket
- 3/8" Drive 15mm Shallow Socket
- Tape Measure and Permanent Marker
- File (De-burring Cut Pipe)
- Torque Wrench Capable of 45ft-lbs (61Nm)
- Penetrating Lubricant Spray
- T15 Torx Screwdriver
- 1/4" Drive Ratchet and 10mm socket
- Punch (Removing Rivet)
- Masking Tape (Side Panel Trim)
- Utility Knife (Side Panel Trim)

Please take time to read and understand these installation instructions.

CORSA recommends that the installation of this system be performed by a qualified service center or professional installer who has the necessary equipment, tools, and experienced personnel. However, if you decide to perform this installation yourself, the use of an additional person may be required.

WARNING: Never work on a hot exhaust system. Allow time for the vehicle to cool. Always wear eye protection when working under a vehicle.

CORSA Performance makes no representation or warranty, expressed or implied that its downpipe or header products and or components there-in comply with federal, state or local emission levels, noise levels, or safety standards or that any of their parts conform with the racing vehicles exemption, unless otherwise noted. The purchaser assumes all responsibility for such use and compliance.

This warranty does not extend to damaged or defect in the finish of a product or to any product, that in the opinion of CORSA Performance, has been misused, damaged by accident or negligence, altered or modified in any way, faulty installation or installed contrary to CORSA installation instructions, or repaired by an unauthorized service facility.

Full warranty available on www.corsaperformance.com

2020+ CADILLAC CT4/5-V INCL. BW 3.0L/3.6L/6.2L

3.0" Axle Back Exhaust, Dual Exit w/ Twin 4.5" S.S. Tips/4.5" Carbon Tips (Box 2 of Cat Back)

CT4-V Part #: 21319 (Incl. CF, BLK, CFBLK); Box 2 of Cat Back Part #: 21317 (Incl. CF, BLK, CFBLK)

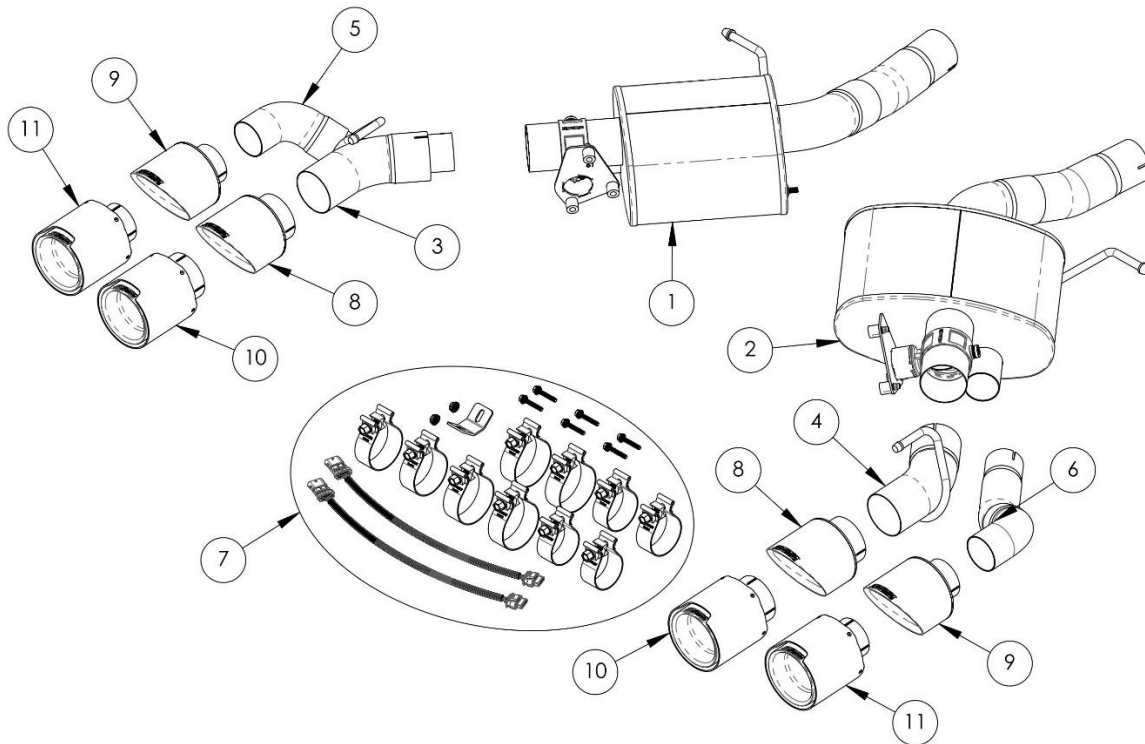
CT5-V Part #: 21322 (Incl. CF, BLK, CFBLK); Box 2 of Cat Back Part #: 21320 (Incl. CF, BLK, CFBLK)

CT5-V (NON-BW) Part #: 21325 (BZL Dump), or 21322; Box 2 of Cat Back Part #: 21323 or 21326 (Incl. CF, BLK,

CORSA
PERFORMANCE

Please confirm that all parts are present according to the bill of materials before beginning the installation.

If something is missing call Tech Support at 440.891.0999 or Toll Free: 1.800.486.0999



21319 - CT4-V BW BILL OF MATERIALS AXLE BACK EXHAUST SECTION

1.	Driver Muffler Assembly (Valved) (15CV2203)	2.	Passenger Muffler Assembly (Valved) (15CV2204)
3.	Driver Inner Tip Pipe Assembly (15CV4333)	4.	Passenger Inner Tip Pipe Assembly (15CV4334)
5.	Driver Outer Tip Pipe Assembly (15CV4101)	6.	Passenger Outer Tip Pipe Assembly (15CV4102)
7.	Hardware Kit (15CV7048)	8.	4.5" Stainless Inner Tip Assembly (16CG3004/BLK) (2)
9.	4.5" Stainless Outer Tip Assembly (16CG3005/BLK) (2)	10.	4.5" Carbon Inner Tip Assembly (99TK3025/BLK) (2)
11.	4.5" Carbon Outer Tip Assembly (99TK3026/BLK) (2)		

2020+ CADILLAC CT4/5-V INCL. BW 3.0L/3.6L/6.2L

3.0" Axle Back Exhaust, Dual Exit w/ Twin 4.5" S.S. Tips/4.5" Carbon Tips (Box 2 of Cat Back)

CT4-V Part #: 21319 (Incl. CF, BLK, CFBLK); Box 2 of Cat Back Part #: 21317 (Incl. CF, BLK, CFBLK)

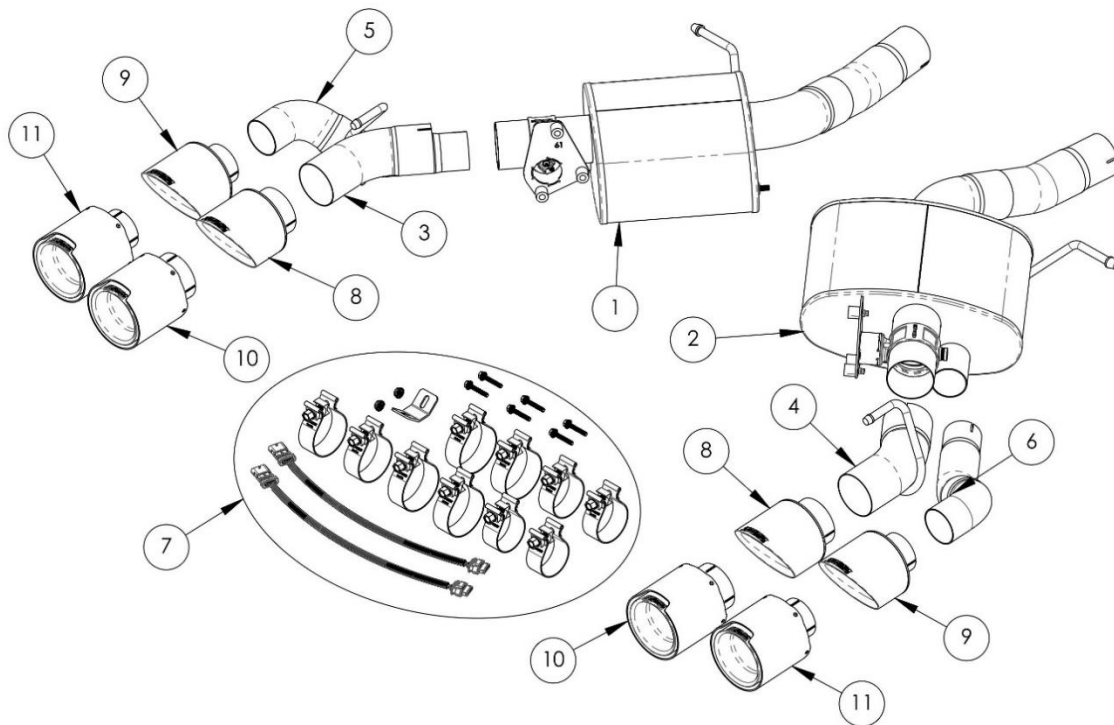
CT5-V Part #: 21322 (Incl. CF, BLK, CFBLK); Box 2 of Cat Back Part #: 21320 (Incl. CF, BLK, CFBLK)

CT5-V (NON-BW) Part #: 21325 (BZL Dump), or 21322; Box 2 of Cat Back Part #: 21323 or 21326 (Incl. CF, BLK,

CORSA
PERFORMANCE

Please confirm that all parts are present according to the bill of materials before beginning the installation.

If something is missing call Tech Support at 440.891.0999 or Toll Free: 1.800.486.0999



21322 - CT5-V (BW & NON-BW WITH BEZEL TIP REMOVAL) BILL OF MATERIALS – AXLE BACK EXHAUST SECTION

1.	Driver Muffler Assembly (Valved) (15CV2109)	2.	Passenger Muffler Assembly (Valved) (15CV2110)
3.	Driver Inner Tip Pipe Assembly (15CV4095)	4.	Passenger Inner Tip Pipe Assembly (15CV4096)
5.	Driver Outer Tip Pipe Assembly (15CV4101)	6.	Passenger Outer Tip Pipe Assembly (15CV4102)
7.	Hardware Kit (15CV7048)	8.	4.5" Stainless Inner Tip Assembly (16CG3004/BLK) (2)
9.	4.5" Stainless Outer Tip Assembly (16CG3005/BLK) (2)	10.	4.5" Carbon Inner Tip Assembly (99TK3025/BLK) (2)
11.	4.5" Carbon Outer Tip Assembly (99TK3026/BLK) (2)		

2020+ CADILLAC CT4/5-V INCL. BW 3.0L/3.6L/6.2L

3.0" Axle Back Exhaust, Dual Exit w/ Twin 4.5" S.S. Tips/4.5" Carbon Tips (Box 2 of Cat Back)

CT4-V Part #: 21319 (Incl. CF, BLK, CFBLK); Box 2 of Cat Back Part #: 21317 (Incl. CF, BLK, CFBLK)

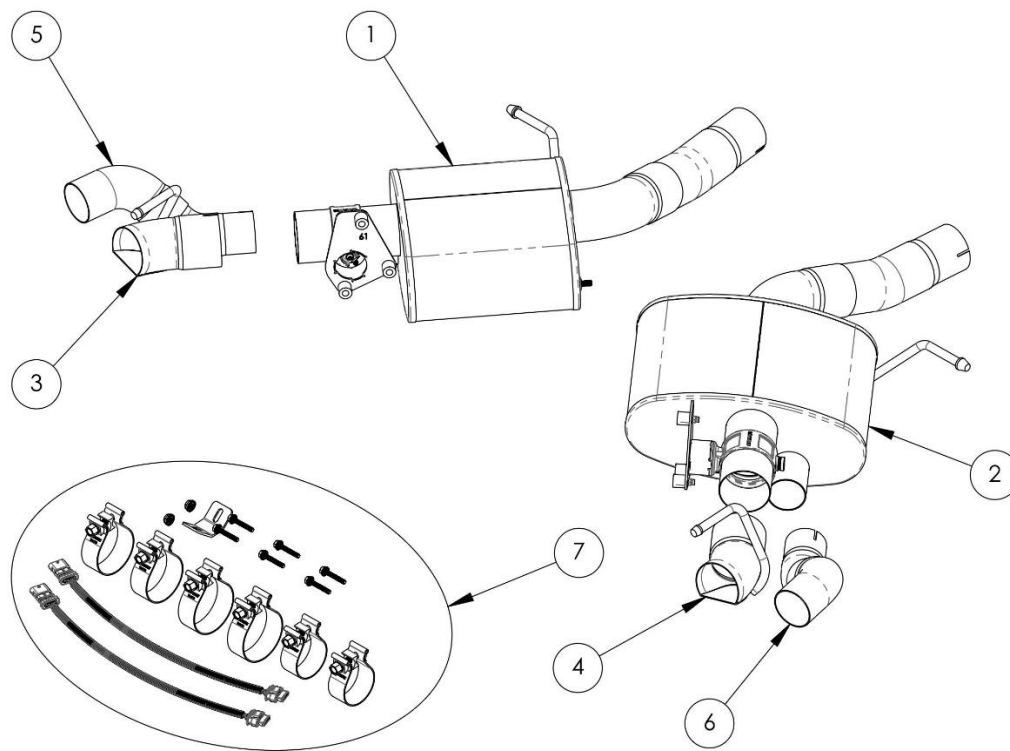
CT5-V Part #: 21322 (Incl. CF, BLK, CFBLK); Box 2 of Cat Back Part #: 21320 (Incl. CF, BLK, CFBLK)

CT5-V (NON-BW) Part #: 21325 (BZL Dump), or 21322; Box 2 of Cat Back Part #: 21323 or 21326 (Incl. CF, BLK,

CORSA
PERFORMANCE

Please confirm that all parts are present according to the bill of materials before beginning the installation.

If something is missing call Tech Support at 440.891.0999 or Toll Free: 1.800.486.0999



21325 - CT5-V (NON-BW WITH BEZEL TIPS) BILL OF MATERIALS AXLE BACK EXHAUST SECTION

1.	Driver Muffler Assembly (Valved) (15CV2109)	2.	Passenger Muffler Assembly (Valved) (15CV2110)
3.	Driver Inner Tip Pipe Assembly (15CV4117)	4.	Passenger Inner Tip Pipe Assembly (15CV4118)
5.	Driver Outer Tip Pipe Assembly (15CV4121)	6.	Passenger Outer Tip Pipe Assembly (15CV4122)
7.	Hardware Kit (15CV7060)		

2020+ CADILLAC CT4/5-V INCL. BW 3.0L/3.6L/6.2L

3.0" Axle Back Exhaust, Dual Exit w/ Twin 4.5" S.S. Tips/4.5" Carbon Tips (Box 2 of Cat Back)

CT4-V Part #: 21319 (Incl. CF, BLK, CFBLK); Box 2 of Cat Back Part #: 21317 (Incl. CF, BLK, CFBLK)

CT5-V Part #: 21322 (Incl. CF, BLK, CFBLK); Box 2 of Cat Back Part #: 21320 (Incl. CF, BLK, CFBLK)

CT5-V (NON-BW) Part #: 21325 (BZL Dump), or 21322; Box 2 of Cat Back Part #: 21323 or 21326 (Incl. CF, BLK,

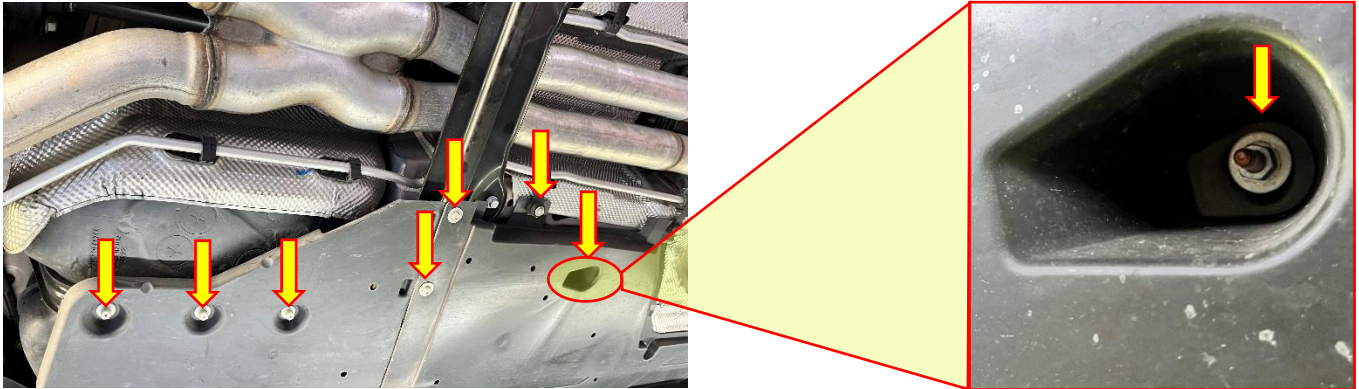
CORSA
PERFORMANCE

CAUTION: Never work on a hot exhaust system. Allow the vehicle to cool for at least an hour and a half. Always wear eye protection when working under a vehicle. It is recommended to use cotton gloves to protect stainless steel surfaces from permanent grease and oil stains.

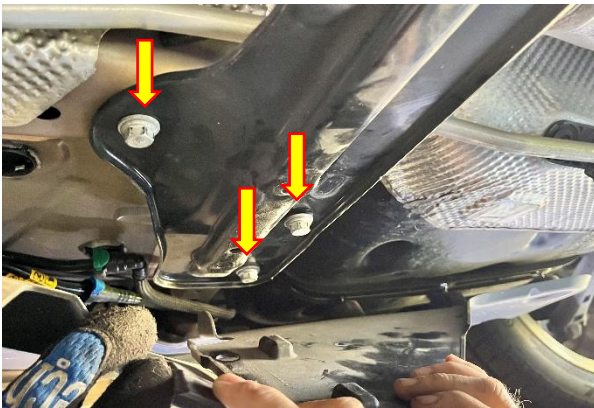
REMOVAL INSTRUCTIONS

FACTORY EXHAUST

NOTE: Begin with **REMOVAL STEPS 1-2**, then skip to **REMOVAL STEP 6** for the CT4-V Blackwing. Begin at **REMOVAL STEP 3** for the CT5-V Blackwing & Non-Blackwing. Continue with **REMOVAL STEP 6** for **ALL VERSIONS** of the CORSA exhaust installation.



1. To access the center Cross Member, remove the 14 bolts (7 per side) securing the plastic underside panels over the ends of the Cross Member with a 3/8" drive ratchet and 10mm socket. Note that two of the fasteners (1 per side) are in a recessed pocket, and two more of the fasteners (1 per side) secure the oil cooler lines along with the underside paneling.



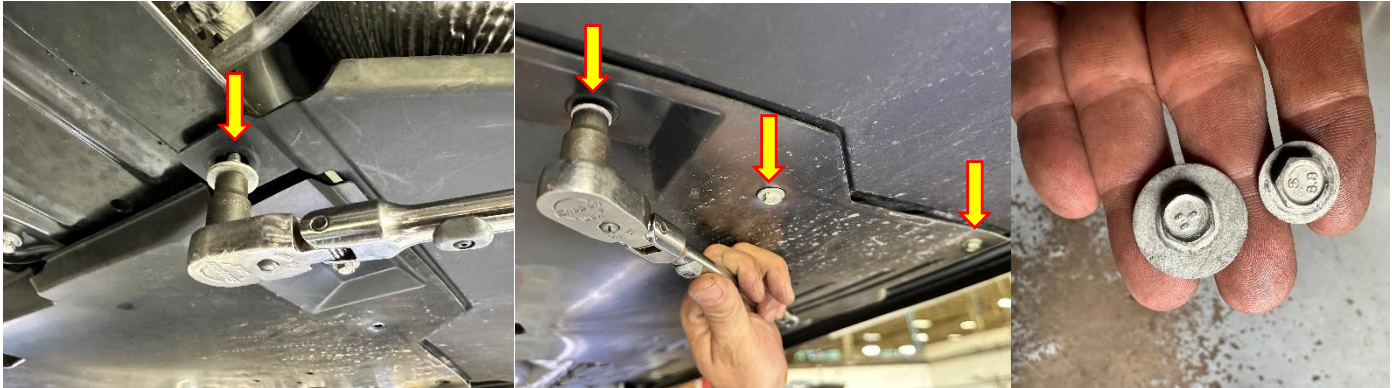
2. Remove the 6 bolts (3 per side) securing the Cross Member to the chassis using a 3/8" drive ratchet and 13mm socket, then move the plastic underside panels down and slide the center Cross Member out from above the paneling, to allow the Cross Member to be removed from the vehicle.

Set aside the Cross Member and all fasteners from REMOVAL STEPS 1 & 2 in a protected location to be reused in INSTALL STEP 53.

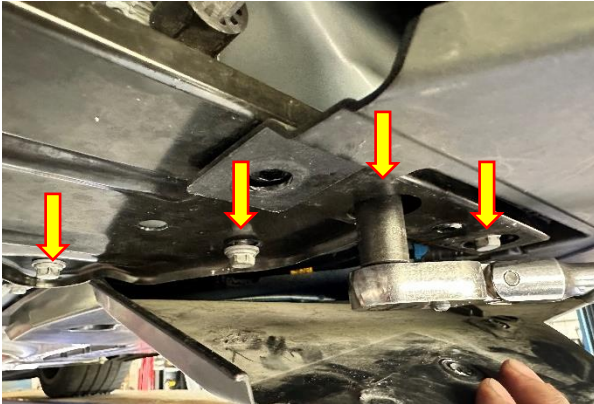
Continued on Next Page ...

REMOVAL INSTRUCTIONS

FACTORY EXHAUST



3. To access the center Cross Member, remove the 8 bolts (4 per side) securing the plastic underside panels over the ends of the Cross Member with a 3/8" drive ratchet and 10mm socket. Note the two inner bolts have a large integrated washer, and the remaining 6 outer bolts have a small integrated washer.



4. Remove the 8 bolts (4 per side) securing the Cross Member to the chassis using a 3/8" drive ratchet and 13mm socket.



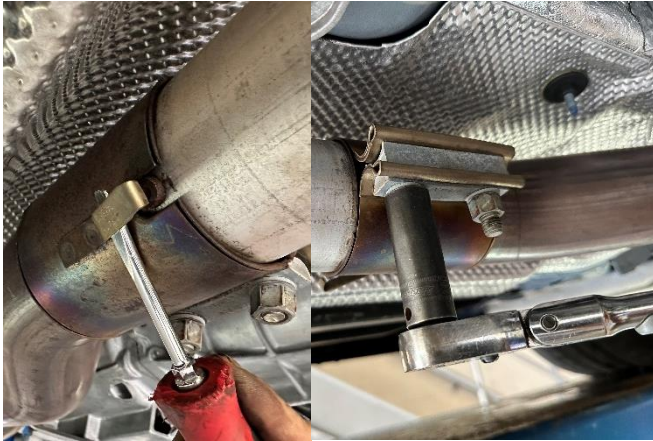
5. Move the plastic underside panels down and slide the center Cross Member out from above the paneling, to allow the Cross Member to be removed from the vehicle.

Set aside the Cross Member and all fasteners from REMOVAL STEPS 3 & 4 in a protected location to be reused in INSTALL STEP 53.

Continued on Next Page ...

REMOVAL INSTRUCTIONS

FACTORY EXHAUST



6. Use a flat head screwdriver to pry open the locking tab on the driver sleeve clamp, located just aft of the driver side exhaust catalyst. Next, use a 3/8" drive ratchet and 15mm deep socket to loosen both nuts on the sleeve clamp as shown.

NOTE: Both nuts must be loosened for the sleeve clamp to fully disengage.



8. Remove the driver and passenger side axle pipe hangers (located in front of the rear suspension) from the factory grommets using grommet pullers or a similar device.

NOTE: The use of a soap and water solution may aid in the removal of hangers from the grommets.



7. Remove both nuts at the passenger side flange connection, located just behind the passenger side exhaust catalyst, using a 3/8" drive ratchet and 15mm deep socket.

Set aside the nuts in a protected location to be reused in REMOVAL STEP 30 (Axle Back Section Only) or during the full cat back exhaust installation (INS5395).



9. Remove the driver and passenger side front muffler hangers (located behind the rear suspension) from the factory grommets using grommet pullers or a similar device.

Continued on Next Page ...

REMOVAL INSTRUCTIONS

FACTORY EXHAUST

NOTE: Continue with **REMOVAL STEPS 10-13**, then skip to the **NOTE SECTION ON PAGE 14** for the **CT4/5-V Blackwing (OEM Tips on Exhaust)**. Begin at **REMOVAL STEP 14** for **ONLY** the **CT5-V Non-Blackwing (OEM Bezel Tips)**.



- 10.** Unplug the wiring harness from the exhaust valve actuators located on the inner most driver and passenger tip pipes. To release the plug, slide the white locking clip away from the actuator, press down on the clip and slide the plug away from the actuator.



- 11.** Both the driver and passenger side valve wiring harness connections should now be disconnected and hanging clear of the stock rear mufflers.



NOTE: An additional helper (or two) is highly recommended for **REMOVAL STEPS 12-13**. The rear fascia must be pulled away from the exhaust for the valve actuators to clear during exhaust removal.

- 12.** Use a 3/8" drive ratchet, 15mm shallow socket, swivel joint, and long extension to remove both nuts securing each of the driver and passenger side rear hanger grommet assemblies. **Set aside the fasteners in a protected location to be reused during INSTALL STEP 16.**



- 13.** Push up slightly on the exhaust tip pipes, then slide the rear hanger grommet assemblies rearward to free them from the studs in the chassis. Next, slide the entire stock exhaust assembly rearward until the stock flange and sleeve clamp are free from the exhaust catalyst pipes. Lower the front of the exhaust, then slide it forwards to allow the rear muffler, tips, and valve actuators to move forward and down to clear the rear fascia while **CAREFULLY** removing the exhaust from the vehicle.

Continued on Next Page ...

REMOVAL INSTRUCTIONS

FACTORY EXHAUST



- 14.** Remove the 6 screws (3 per side) securing the Side under paneling to the exhaust heat shielding using a T15 Torx Screwdriver.

Set aside the screws in a protected location to be reused during INSTALL STEP 30 (WITH CORSA TIPS) or INSTALL STEP 48 (WITH FACTORY BEZEL TIPS).



NOTE: An additional helper (or two) is highly recommended for **REMOVAL STEPS 15-16**. The rear fascia must be pulled away from the exhaust for the valve actuators to clear during exhaust removal.

- 15.** Unplug the wiring harness from the exhaust valve actuators located on the innermost driver and passenger tip pipes. To release the plug, slide the white locking clip away from the actuator, press down on the clip and slide the plug away from the actuator. This step must be done while removing the factory exhaust from the vehicle.



- 16.** Slide the entire stock exhaust assembly rearward until the stock flange and sleeve clamp are free from the exhaust catalyst pipes. Lower the front of the exhaust, then slide it forwards to allow the rear muffler, valve actuators, and rear muffler hangers to move forward and down to clear the rear fascia while **CAREFULLY** removing the exhaust from the vehicle.



Continued on Next Page ...

REMOVAL INSTRUCTIONS

FACTORY EXHAUST

IMPORTANT NOTE:

- A. Skip to the **NOTE SECTION ON PAGE 14** for the **CORSA BEZEL DUMP VERSIONS** of the CORSA exhaust installation for the **CT5-V Non-Blackwing**. **DO NOT REMOVE** the **FACTORY BEZEL TIP** if installing **ONLY** the **21324 CORSA TUNNEL SECTION** or if installing the **21323/21325 CORSA BEZEL DUMP CAT BACK/AXLE BACK** exhaust.

OR

- B. Continue with **REMOVAL STEPS 17-25** for the **OPTIONAL FACTORY BEZEL TIP REMOVAL** for the **CT5-V Non-Blackwing ONLY**. This process is **ONLY** necessary when converting from **FACTORY BEZEL TIPS** to one of the **FULL TIP VERSIONS** of the **21322/21326 CORSA AXLE BACK/CAT BACK** exhaust.



- 17. CAREFULLY** remove the two reflectors on each side of the vehicle to enable access to the four rivets (2 per side) securing the top of the OEM Bezel Tips to the rear fascia. Each Reflector is snapped in place using two tabs, which can be pushed out from inside the fascia.



- 18.** Use a pair of needle nose pliers to twist off and remove the three metal ears on each of the two driver side rivets. Next, use a punch to push the center of each rivet through the mounting holes in the rear fascia to remove the rivets.



- 19.** Remove the screw securing the lower inside position of the driver side OEM Bezel Tip to the rear fascia using a T15 Torx Screwdriver. Note that this screw will not be reused.

Continued on Next Page ...

REMOVAL INSTRUCTIONS

FACTORY EXHAUST



- 20. CAREFULLY** remove the driver side OEM Bezel Tip from the rear fascia as shown.

Repeat **REMOVAL STEPS 18-20** on the passenger side of the vehicle.



- 21.** Use a 3/8" drive ratchet and 15mm socket to remove both nuts securing each of the driver and passenger side rear hanger grommet assemblies. **Set aside the fasteners in a protected location to be reused during INSTALL STEP 16.**



- 22.** Locate the supplied driver and passenger side under panel cutting templates in the back of the **INS5396 CORSA AXLE BACK** instructions (this document). Use a pair of scissors to cut out the templates, and clip or tape the cutting templates as shown to the side under panels, just below the outer tip position as shown. The edges of the cutting template will align with the edges of the side under panels. Run a piece of masking tape underneath the entire cutting edge of each cutting template and then mark the **CUT LINE** as shown.

NOTE: The hole position in the cutting template will align to the corresponding hole in the side under panel when the position of the cutting template is correct.

- 23.** Remove the cutting templates from the side under panels. Next, using a straight edge and a utility knife, cut the side under panels as shown along the **CUT LINE**. Make sure to lightly score the panel at first and gradually cut through the panel in multiple passes.

Continued on Next Page ...

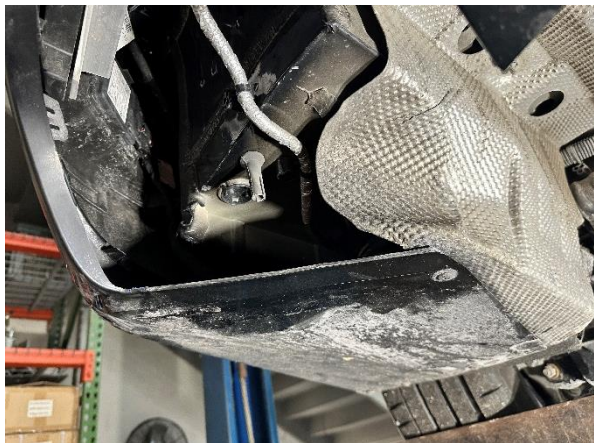
2020+ CADILLAC CT4/5-V INCL. BW 3.0L/3.6L/6.2L

3.0" Axle Back Exhaust, Dual Exit w/ Twin 4.5" S.S. Tips/4.5" Carbon Tips (Box 2 of Cat Back)
CT4-V Part #: 21319 (Incl. CF, BLK, CFBLK); Box 2 of Cat Back Part #: 21317 (Incl. CF, BLK, CFBLK)
CT5-V Part #: 21322 (Incl. CF, BLK, CFBLK); Box 2 of Cat Back Part #: 21320 (Incl. CF, BLK, CFBLK)
CT5-V (NON-BW) Part #: 21325 (BZL Dump), or 21322; Box 2 of Cat Back Part #: 21323 or 21326 (Incl. CF, BLK,

CORSA
PERFORMANCE

REMOVAL INSTRUCTIONS

FACTORY EXHAUST



- 24.** The edge of the cut should make a clean transition to the edge of the tip cutout in the rear fascia and should align with the exhaust heat shielding as shown.



- 25. CAREFULLY** align and reinstall the two reflectors on each side of the vehicle by snapping the two mounting tabs in place.

Continued on Next Page ...

REMOVAL INSTRUCTIONS

FACTORY EXHAUST

IMPORTANT NOTE:

- C. Continue with **STEP 1 OF THE INSTALLATION SECTION OF THE CORSA DOUBLE X-PIPE TUNNEL INSTRUCTIONS (INS5395)** if installing the **FULL 21317/21320/21323/21326 CORSA CAT BACK** exhaust system for the CT4/5-V Blackwing and CT5-V Non-Blackwing.

OR

- D. Continue with **REMOVAL STEPS 26-30** if installing **ONLY** the **21319/21322/21325 CORSA AXLE BACK SECTION** of the CORSA exhaust system with the **FACTORY TUNNEL SECTION**.



- 26.** On the factory exhaust, measure 12" rearwards (towards the factory muffler) from the rearward edge of the passenger side axle pipe hanger bracket as shown, following the outside profile of the exhaust pipe, to mark the **CUT LINE**.



- 27.** Measure 13.5" rearwards (towards the factory muffler) from the rearward edge of the driver side axle pipe hanger bracket as shown, following the outside profile of the exhaust pipe, to mark the **CUT LINE**.



- 28.** Using a chain cutter or similar device, cut both the driver and passenger side exhaust pipes at the marked locations.



- 29.** Thoroughly deburr both cut edges of the **FACTORY TUNNEL** exhaust section.

Continued on Next Page ...

2020+ CADILLAC CT4/5-V INCL. BW 3.0L/3.6L/6.2L

3.0" Axle Back Exhaust, Dual Exit w/ Twin 4.5" S.S. Tips/4.5" Carbon Tips (Box 2 of Cat Back)

CT4-V Part #: 21319 (Incl. CF, BLK, CFBLK); Box 2 of Cat Back Part #: 21317 (Incl. CF, BLK, CFBLK)

CT5-V Part #: 21322 (Incl. CF, BLK, CFBLK); Box 2 of Cat Back Part #: 21320 (Incl. CF, BLK, CFBLK)

CT5-V (NON-BW) Part #: 21325 (BZL Dump), or 21322; Box 2 of Cat Back Part #: 21323 or 21326 (Incl. CF, BLK,

CORSA
PERFORMANCE

REMOVAL INSTRUCTIONS

FACTORY EXHAUST



- 30.** Reinstall the **FACTORY TUNNEL** exhaust section into the vehicle. Installation is the reverse of **REMOVAL STEPS 6-8**.

Step 30 concludes the removal of the factory exhaust.

2020+ CADILLAC CT4/5-V INCL. BW 3.0L/3.6L/6.2L

3.0" Axle Back Exhaust, Dual Exit w/ Twin 4.5" S.S. Tips/4.5" Carbon Tips (Box 2 of Cat Back)
CT4-V Part #: 21319 (Incl. CF, BLK, CFBLK); Box 2 of Cat Back Part #: 21317 (Incl. CF, BLK, CFBLK)
CT5-V Part #: 21322 (Incl. CF, BLK, CFBLK); Box 2 of Cat Back Part #: 21320 (Incl. CF, BLK, CFBLK)
CT5-V (NON-BW) Part #: 21325 (BZL Dump), or 21322; Box 2 of Cat Back Part #: 21323 or 21326 (Incl. CF, BLK,

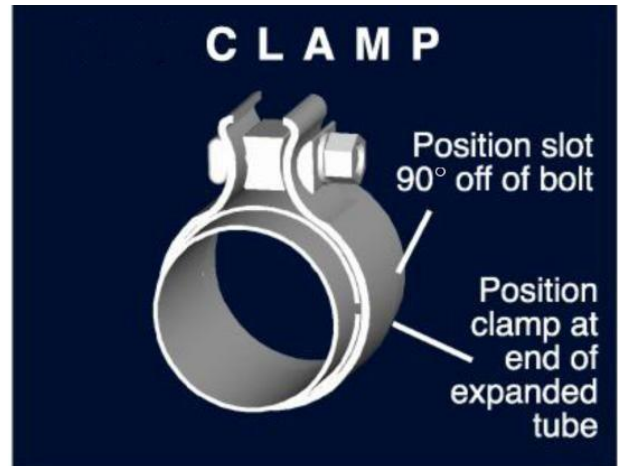
CORSA
PERFORMANCE

WARNING! DO NOT SKIP THIS STEP!

It is recommended to apply anti-seize lubricant to the threads **ONLY** of all the clamps and flange bolts. Failure to follow this procedure can cause nuts to seize on clamps and potentially destroy threads.

After applying anti-seize lubricant, be sure to **thoroughly** clean your hands, as lubricant will tarnish stainless steel.

All clamps should be tightened using a properly calibrated Torque Wrench. Using an air impact gun will damage the clamp and reduce its ability to effectively seal the joint. It may also cause the joint to separate, thereby causing damage to your exhaust system and to your vehicle.



NOTE: Align all clamps so that the center of the clamp bolt is 90 degrees from the notch in the pipe.

INSTALLATION INSTRUCTIONS

CORSA EXHAUST



1. On the **FACTORY REAR MUFFLER** section, remove the three nuts on each valve actuator using a 1/4" drive ratchet and 10mm socket. Remove both **FACTORY VALVE ACTUATORS** from the valve assemblies on the muffler.

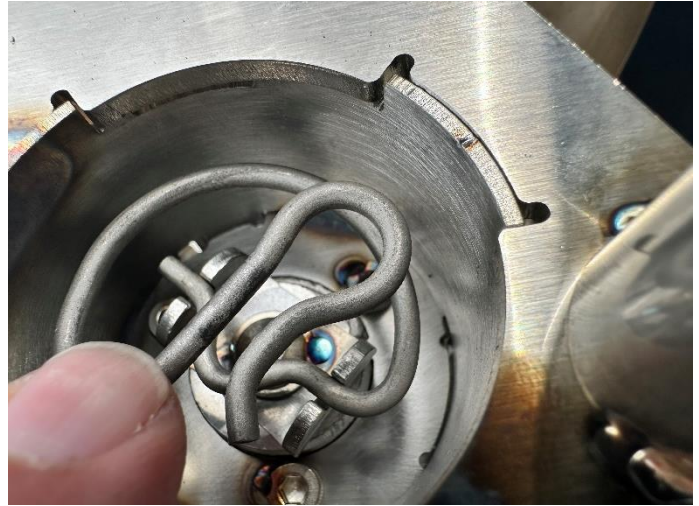
Continued on Next Page ...

INSTALLATION INSTRUCTIONS

CORSA EXHAUST



2. Locate the passenger muffler assembly and three of the supplied M6 bolts from the hardware kit. Rotate the valve actuator bracket on the CORSA muffler until the valve plate is in the fully open position as shown.



3. Locate the actuator engagement spring from the passenger **FACTORY VALVE ACTUATOR**. Position the actuator spring onto the top of the valve as shown.



4. Position the passenger **FACTORY VALVE ACTUATOR** onto the actuator spring, while aligning the actuator mounting holes with the bolt pattern on the CORSA valve as shown, and secure with the three M6 bolts, using a 1/4" drive ratchet and 10mm socket. Torque bolts to **89 IN-LBS**. Verify correct actuator assembly onto the CORSA valve by confirming actuator spring is fully seated and valve plate movement is limited only by the actuator rotation and position.
5. Locate the driver muffler assembly and three supplied M6 bolts from the hardware kit. Repeat **INSTALL STEPS 2-4** to install the driver **FACTORY VALVE ACTUATOR** onto the driver muffler assembly.



Continued on Next Page ...

INSTALLATION INSTRUCTIONS

CORSA EXHAUST

IMPORTANT NOTE:

- A. Continue with **INSTALL STEPS 6-30**, then skip to the **INSTALL STEP 52** for the **FULL TIP VERSIONS** of the **21317/21319/21320/21322/21326 CORSA CAT BACK/AXLE BACK** exhaust for the **CT4/5-V Blackwing and CT5-V Non-Blackwing**.

OR

- B. Begin at **INSTALL STEP 31** for the **BEZEL DUMP VERSION** of the **21323/21325 CORSA CAT BACK/AXLE BACK** exhaust for the **CT5-V Non-Blackwing**.



6. Locate a 2.75" clamp. Slide the clamp over the inlet of the passenger muffler assembly, so that the nut will be located on the inside of the muffler inlet and facing downwards.



7. Slide the passenger muffler assembly onto the passenger axle pipe outlet (or passenger outlet of the **FACTORY TUNNEL** section), with a recommended pipe overlap of 1.75 inches.



8. Slide the front muffler hanger into the corresponding grommet as shown. Rotate the passenger muffler until the hanger is horizontal as it runs through the stock grommet.



9. Secure the passenger muffler using a ratchet and 15mm deep socket, until the muffler inlet pipe is snug on the axle pipe outlet. Leave the clamp connection loose enough for adjustment.

NOTE: The use of a soap and water solution may aid in the installation of hanger grommets.

10. Locate a 2.75" clamp. Repeat **INSTALL STEPS 6-9** to install the driver muffler assembly onto the driver axle pipe (or driver outlet of the **FACTORY TUNNEL** section).

Continued on Next Page ...

2020+ CADILLAC CT4/5-V INCL. BW 3.0L/3.6L/6.2L

3.0" Axle Back Exhaust, Dual Exit w/ Twin 4.5" S.S. Tips/4.5" Carbon Tips (Box 2 of Cat Back)
CT4-V Part #: 21319 (Incl. CF, BLK, CFBLK); Box 2 of Cat Back Part #: 21317 (Incl. CF, BLK, CFBLK)
CT5-V Part #: 21322 (Incl. CF, BLK, CFBLK); Box 2 of Cat Back Part #: 21320 (Incl. CF, BLK, CFBLK)
CT5-V (NON-BW) Part #: 21325 (BZL Dump), or 21322; Box 2 of Cat Back Part #: 21323 or 21326 (Incl. CF, BLK,

CORSA
PERFORMANCE

INSTALLATION INSTRUCTIONS

CORSA EXHAUST



- 11.** Locate the supplied 5/16" nuts and muffler tie bracket from the hardware kit. Slide the muffler tie bracket over the studs from both mufflers as shown.
- 12.** Secure the muffler tie bracket using a 1/2" wrench. Leave the nuts loose enough for adjustment.



- 13.** Remove both rear exhaust grommets from the exhaust hangers on the **FACTORY REAR MUFFLER** using grommet pullers or a similar device. Note the orientation of the grommets for the following installation step.

NOTE: The flats near the outer mounting hole locations must be facing upwards as shown (see arrow locations in above image).

Continued on Next Page ...

INSTALLATION INSTRUCTIONS

CORSA EXHAUST



- 14.** Locate a 3.0" clamp and the passenger inner tip pipe assembly. Slide the clamp over the inlet of the inner tip pipe, so that the nut will be located on the inside of the tip pipe inlet and facing downwards. Install the rear exhaust grommet onto the rear hanger position with the flat facing upwards as shown.



- 15.** Slide the passenger inner tip pipe assembly onto the passenger muffler outlet, with a recommended pipe overlap of 1.625 inches.



- 16.** Locate two of the nuts set aside in **REMOVAL STEPS 12 (CT4/5-V BW ONLY) or REMOVAL STEP 21 (CT5-V NON-BW ONLY)**. Slide the passenger rear hanger grommet onto the studs in the chassis as shown. Secure the grommet to the chassis using a 3/8" drive ratchet and 15mm socket.



- 17.** Secure the passenger inner tip pipe using a ratchet and 15mm deep socket, until the inner tip pipe inlet is snug on the muffler outlet. Leave the clamp connection loose enough for adjustment.

- 18.** Locate a 3.0" clamp and the driver inner tip pipe assembly. Repeat **INSTALL STEPS 14-17** to install the driver inner tip pipe assembly onto the driver muffler assembly.

Continued on Next Page ...

INSTALLATION INSTRUCTIONS

CORSA EXHAUST



- 19.** Locate both valve wiring extensions from the hardware kit. Connect both wiring extensions to the chassis side of the valve wiring connectors. Push the grey locking tabs on the wiring connectors down to secure the connections. Connect the opposite end of the wiring extensions to the valve actuators (installed on the mufflers) on both sides of the vehicle. Push in the grey locking tabs on the wiring connectors to secure the connections. Move the valve wiring extensions to the center of the vehicle as much as possible to keep clearance to the rest of the exhaust system components (passenger side shown).



- 20.** Locate a 3.0" clamp and one of the CORSA stainless (or Carbon) inner tip assemblies. Slide the clamp over the tip inlet, so that the nut will be located on top of the tip inlet and facing outwards. Slide the inner tip assembly onto the passenger inner tip pipe with approximately 1.75" of overlap.
- 21.** Adjust the rotation of the CORSA inner tip assembly until the CORSA logo is centered on the top of the tip, then secure the exhaust clamp at the tip inlet using a 15mm socket and 3/8" ratchet, until the tip is snug on the inner tip pipe. Leave the clamp connection loose enough for adjustment.
- 22.** Locate a 3.0" clamp and the other CORSA stainless (or Carbon) inner tip assembly. Repeat **INSTALL STEPS 20-21** to install the driver inner tip assembly onto the driver inner tip pipe assembly.

Continued on Next Page ...

2020+ CADILLAC CT4/5-V INCL. BW 3.0L/3.6L/6.2L

3.0" Axle Back Exhaust, Dual Exit w/ Twin 4.5" S.S. Tips/4.5" Carbon Tips (Box 2 of Cat Back)
CT4-V Part #: 21319 (Incl. CF, BLK, CFBLK); Box 2 of Cat Back Part #: 21317 (Incl. CF, BLK, CFBLK)
CT5-V Part #: 21322 (Incl. CF, BLK, CFBLK); Box 2 of Cat Back Part #: 21320 (Incl. CF, BLK, CFBLK)
CT5-V (NON-BW) Part #: 21325 (BZL Dump), or 21322; Box 2 of Cat Back Part #: 21323 or 21326 (Incl. CF, BLK,

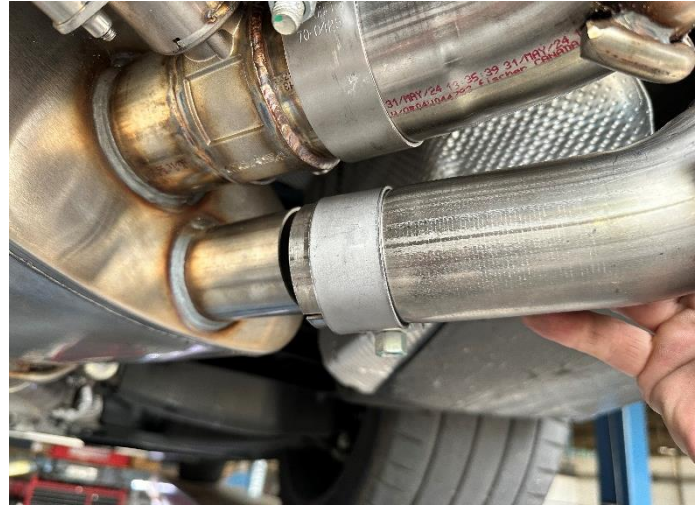
CORSA
PERFORMANCE

INSTALLATION INSTRUCTIONS

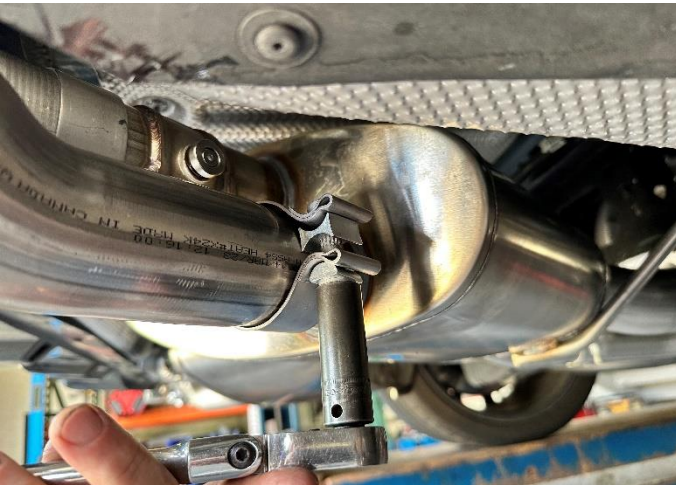
CORSA EXHAUST



23. Locate a 2.25" clamp and the passenger outer tip pipe assembly. Slide the clamp over the inlet of the inner tip pipe, so that the nut will be located on the outside of the tip pipe inlet and facing downwards.



24. Slide the passenger outer tip pipe assembly onto the passenger muffler outlet, with a recommended pipe overlap of 1.625 inches.



25. Secure the passenger outer tip pipe using a ratchet and 15mm deep socket, until the outer tip pipe inlet is snug on the muffler outlet. Leave the clamp connection loose enough for adjustment.

26. Locate a 2.25" clamp and the driver outer tip pipe assembly. Repeat **INSTALL STEPS 23-25** to install the driver outer tip pipe assembly onto the driver muffler assembly.

Continued on Next Page . . .

2020+ CADILLAC CT4/5-V INCL. BW 3.0L/3.6L/6.2L

3.0" Axle Back Exhaust, Dual Exit w/ Twin 4.5" S.S. Tips/4.5" Carbon Tips (Box 2 of Cat Back)
CT4-V Part #: 21319 (Incl. CF, BLK, CFBLK); Box 2 of Cat Back Part #: 21317 (Incl. CF, BLK, CFBLK)
CT5-V Part #: 21322 (Incl. CF, BLK, CFBLK); Box 2 of Cat Back Part #: 21320 (Incl. CF, BLK, CFBLK)
CT5-V (NON-BW) Part #: 21325 (BZL Dump), or 21322; Box 2 of Cat Back Part #: 21323 or 21326 (Incl. CF, BLK,

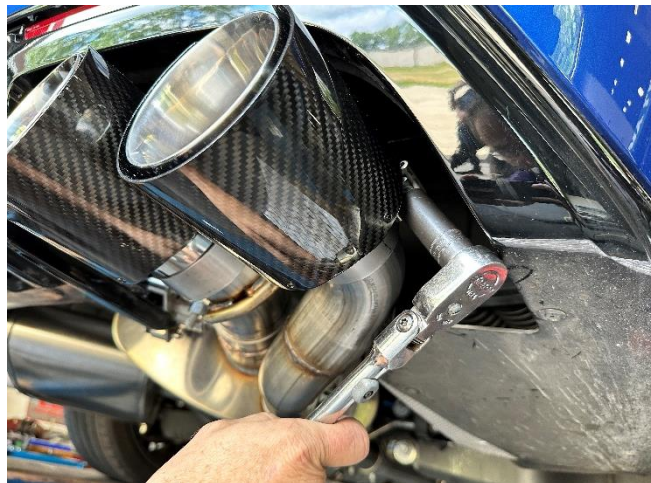
CORSA
PERFORMANCE

INSTALLATION INSTRUCTIONS

CORSA EXHAUST



27. Locate a 3.0" clamp and one of the CORSA stainless (or Carbon) outer tip assemblies. Slide the clamp over the tip inlet, so that the nut will be located on the outside top of the tip inlet and facing diagonally downwards. Slide the outer tip assembly onto the passenger outer tip pipe with approximately 1.75" of overlap.



28. Adjust the rotation of the CORSA outer tip assembly until the CORSA logo is centered on the top of the tip, then secure the exhaust clamp at the tip inlet using a 15mm socket and 3/8" ratchet, until the tip is snug on the outer tip pipe. Leave the clamp connection loose enough for adjustment.

29. Locate a 3.0" clamp and the other CORSA stainless (or Carbon) outer tip assembly. Repeat **INSTALL STEPS 27-28** to install the driver outer tip assembly onto the driver outer tip pipe assembly.



30. (ADDITIONAL STEP FOR CT5-V Non-Blackwing ONLY with OPTIONAL FACTORY BEZEL TIP REMOVAL) Locate the six screws set aside in **REMOVAL STEP 14**. Reinstall the 6 screws (3 per side) securing the side under paneling to the exhaust heat shielding using a T15 Torx Screwdriver.

Continued on Next Page ...

INSTALLATION INSTRUCTIONS

CORSA EXHAUST



- 31.** Locate both valve wiring extensions from the hardware kit. Connect both wiring extensions to the chassis side of the valve wiring connectors. Push the grey locking tabs on the wiring connectors down to secure the connections. Connect the opposite end of the wiring extensions to the valve actuators (installed on the mufflers) on both sides of the vehicle. Push in the grey locking tabs on the wiring connectors to secure the connections. Move the valve wiring extensions to the center of the vehicle as much as possible to keep clearance to the rest of the exhaust system components (passenger side shown).



- 32.** Locate a 2.75" clamp. Slide the clamp over the inlet of the passenger muffler assembly, so that the nut will be located on the inside of the muffler inlet and facing downwards.



- 33.** Slide the passenger muffler assembly onto the passenger axle pipe outlet (or passenger outlet of the **FACTORY TUNNEL** section), with a recommended pipe overlap of 1.75 inches.

Continued on Next Page ...

2020+ CADILLAC CT4/5-V INCL. BW 3.0L/3.6L/6.2L

3.0" Axle Back Exhaust, Dual Exit w/ Twin 4.5" S.S. Tips/4.5" Carbon Tips (Box 2 of Cat Back)
CT4-V Part #: 21319 (Incl. CF, BLK, CFBLK); Box 2 of Cat Back Part #: 21317 (Incl. CF, BLK, CFBLK)
CT5-V Part #: 21322 (Incl. CF, BLK, CFBLK); Box 2 of Cat Back Part #: 21320 (Incl. CF, BLK, CFBLK)
CT5-V (NON-BW) Part #: 21325 (BZL Dump), or 21322; Box 2 of Cat Back Part #: 21323 or 21326 (Incl. CF, BLK,



INSTALLATION INSTRUCTIONS

CORSA EXHAUST



- 34.** Slide the front muffler hanger into the corresponding grommet as shown.

NOTE: The use of a soap and water solution may aid in the installation of hanger grommets.

- 35.** Locate a 2.75" clamp. Repeat **INSTALL STEPS 32-34** to install the driver muffler assembly onto the driver axle pipe (or driver outlet of the **FACTORY TUNNEL** section).



- 36.** Locate a 3.0" clamp and the passenger inner tip pipe assembly. Slide the clamp over the inlet of the inner tip pipe. Slide the clamp over the inlet of the inner tip pipe, so that the nut will be located on the inside of the tip pipe inlet and facing downwards.



- 37.** Rotate the passenger muffler as necessary to create clearance to install the passenger inner tip pipe hanger. Slide the inner tip pipe hanger into the corresponding grommet as shown.

NOTE: Once again, the use of a soap and water solution may aid in the installation of hanger grommets.

Continued on Next Page ...

2020+ CADILLAC CT4/5-V INCL. BW 3.0L/3.6L/6.2L

3.0" Axle Back Exhaust, Dual Exit w/ Twin 4.5" S.S. Tips/4.5" Carbon Tips (Box 2 of Cat Back)
CT4-V Part #: 21319 (Incl. CF, BLK, CFBLK); Box 2 of Cat Back Part #: 21317 (Incl. CF, BLK, CFBLK)
CT5-V Part #: 21322 (Incl. CF, BLK, CFBLK); Box 2 of Cat Back Part #: 21320 (Incl. CF, BLK, CFBLK)
CT5-V (NON-BW) Part #: 21325 (BZL Dump), or 21322; Box 2 of Cat Back Part #: 21323 or 21326 (Incl. CF, BLK,

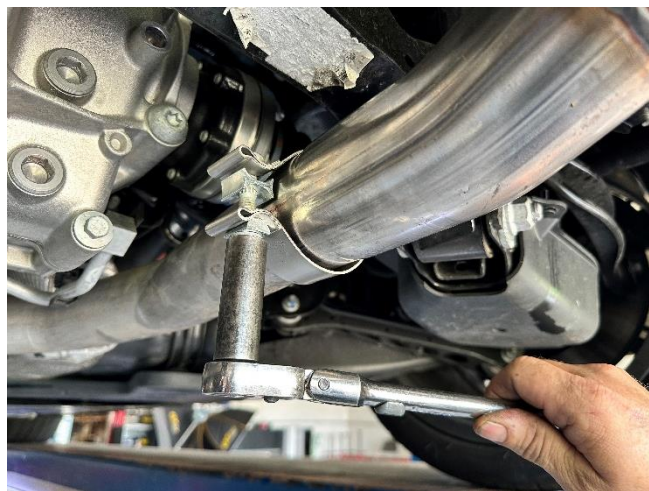
CORSA
PERFORMANCE

INSTALLATION INSTRUCTIONS

CORSA EXHAUST



- 38.** Rotate the passenger muffler upwards until the passenger inner tip pipe assembly slides onto the passenger muffler outlet, with a recommended pipe overlap of 1.625 inches.



- 39.** Rotate the passenger muffler upwards until the front muffler hanger is horizontal as it runs through the stock grommet, then secure the passenger muffler using a ratchet and 15mm deep socket, until the muffler inlet pipe is snug on the axle pipe outlet. Leave the clamp connection loose enough for adjustment.

- 40.** Locate a 3.0" clamp. Repeat **INSTALL STEPS 36-39** to install the driver inner tip pipe onto the driver muffler assembly and to secure the driver muffler assembly onto the driver axle pipe (or driver outlet of the **FACTORY TUNNEL** section).



- 41.** Locate the supplied 5/16" nuts and muffler tie bracket from the hardware kit. Slide the muffler tie bracket over the studs from both mufflers as shown.



- 42.** Secure the muffler tie bracket using a 1/2" wrench. Leave the nuts loose enough for adjustment.

Continued on Next Page ...

2020+ CADILLAC CT4/5-V INCL. BW 3.0L/3.6L/6.2L

3.0" Axle Back Exhaust, Dual Exit w/ Twin 4.5" S.S. Tips/4.5" Carbon Tips (Box 2 of Cat Back)

CT4-V Part #: 21319 (Incl. CF, BLK, CFBLK); Box 2 of Cat Back Part #: 21317 (Incl. CF, BLK, CFBLK)

CT5-V Part #: 21322 (Incl. CF, BLK, CFBLK); Box 2 of Cat Back Part #: 21320 (Incl. CF, BLK, CFBLK)

CT5-V (NON-BW) Part #: 21325 (BZL Dump), or 21322; Box 2 of Cat Back Part #: 21323 or 21326 (Incl. CF, BLK,

CORSA
PERFORMANCE

INSTALLATION INSTRUCTIONS

CORSA EXHAUST



43. Locate a 2.25" clamp and the passenger outer tip pipe assembly. Slide the clamp over the inlet of the inner tip pipe, so that the nut will be located on the outside of the tip pipe inlet and facing downwards.



44. Slide the passenger outer tip pipe assembly onto the passenger muffler outlet, with a recommended pipe overlap of 1.625 inches.



45. Rotate the passenger inner tip pipe until the flat on the bottom of the inner tip pipe and the inside lower edge of the factory bezel tip are parallel as shown.



46. Secure the passenger inner tip pipe using a ratchet and 15mm deep socket, until the inner tip pipe inlet is snug on the muffler outlet. Leave the clamp connection loose enough for adjustment.

47. Locate a 2.25" clamp and the driver outer tip pipe assembly. Repeat **INSTALL STEPS 43-46** to install the driver outer tip pipe assembly onto the driver muffler assembly and to secure the driver inner tip pipe assembly to the driver muffler.

Continued on Next Page ...

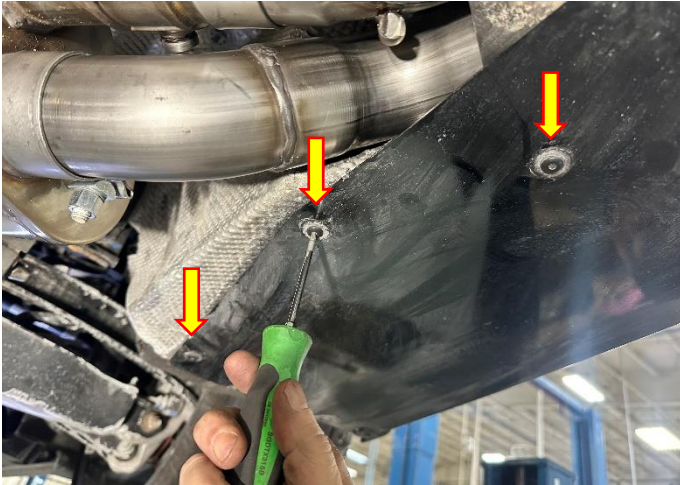
2020+ CADILLAC CT4/5-V INCL. BW 3.0L/3.6L/6.2L

3.0" Axle Back Exhaust, Dual Exit w/ Twin 4.5" S.S. Tips/4.5" Carbon Tips (Box 2 of Cat Back)
CT4-V Part #: 21319 (Incl. CF, BLK, CFBLK); Box 2 of Cat Back Part #: 21317 (Incl. CF, BLK, CFBLK)
CT5-V Part #: 21322 (Incl. CF, BLK, CFBLK); Box 2 of Cat Back Part #: 21320 (Incl. CF, BLK, CFBLK)
CT5-V (NON-BW) Part #: 21325 (BZL Dump), or 21322; Box 2 of Cat Back Part #: 21323 or 21326 (Incl. CF, BLK,

CORSA
PERFORMANCE

INSTALLATION INSTRUCTIONS

CORSA EXHAUST



- 48.** Locate the six screws set aside in **REMOVAL STEP 14**. Reinstall the 6 screws (3 per side) securing the side under paneling to the exhaust heat shielding using a T15 Torx Screwdriver.



- 49.** Adjust the passenger outer tip pipe rotation and position until the pipe is centered within the factory bezel tip, and the pipe has clearance to both the outer exhaust heat shielding and the passenger inner tip pipe as shown.



- 50.** Secure the passenger outer tip pipe using a ratchet and 15mm deep socket, until the outer tip pipe inlet is snug on the muffler outlet. Leave the clamp connection loose enough for adjustment.
- 51.** Repeat **INSTALL STEPS 49-50** to secure the driver outer tip pipe assembly to the driver muffler.

Continued on Next Page ...

INSTALLATION INSTRUCTIONS

CORSA EXHAUST



- 52.** Adjust the system, including the **FACTORY TUNNEL SECTION** position, (or the head pipe connections, and the x-pipe and axle pipe depth and rotation if installing the full CORSA cat back system) the rear mufflers, and the inner and outer tip pipe depth and rotation, so that the CORSA tips (or tip pipes) are centered in the tip cutouts in the bumper valence (or within the factory bezel tips). The rear mufflers should be rotated upwards in the center (muffler tie bracket location) to allow all the exhaust tips to have the same vertical clearances on top to the cutouts in the rear valence. Check the position of all hangers to make sure they are properly seated within their corresponding grommets. Check clearances between the valve actuators and the chassis. Check clearances between the system components and chassis and verify that the outer tip pipes are not in contact with the heat shielding or the vehicle under paneling (or in contact with the inside of the factory bezel tips). If necessary, the heat shielding above the exhaust can be shaped to create additional clearances to the head pipes just behind the transmission cradle (cat back only). At this time, start at the front of the vehicle, and tighten all flange hardware (cat back only) and clamps to **45 FT-LBS** using the torque wrench and 15mm socket. Tighten the 5/16" nuts on the muffler tie bracket to **11 FT-LBS**.

Continued on Next Page ...

2020+ CADILLAC CT4/5-V INCL. BW 3.0L/3.6L/6.2L

3.0" Axle Back Exhaust, Dual Exit w/ Twin 4.5" S.S. Tips/4.5" Carbon Tips (Box 2 of Cat Back)
CT4-V Part #: 21319 (Incl. CF, BLK, CFBLK); Box 2 of Cat Back Part #: 21317 (Incl. CF, BLK, CFBLK)
CT5-V Part #: 21322 (Incl. CF, BLK, CFBLK); Box 2 of Cat Back Part #: 21320 (Incl. CF, BLK, CFBLK)
CT5-V (NON-BW) Part #: 21325 (BZL Dump), or 21322; Box 2 of Cat Back Part #: 21323 or 21326 (Incl. CF, BLK,

CORSA
PERFORMANCE

INSTALLATION INSTRUCTIONS

CORSA EXHAUST



53. Locate the cross member and all fasteners set aside in **REMOVAL STEPS 1-2 (CT4-V BW ONLY) or REMOVAL STEPS 3-5 (CT5-V BW/NON-BW ONLY)** of the stock exhaust removal process. Reinstall the cross member and plastic underside paneling. Installation is reverse of removal. Installation Complete. This concludes the installation of your CORSA Performance exhaust system.

NOTE: During cold weather start-ups, you may experience an exhaust sound that is deeper and louder in tone than usual. This is temporary and will diminish to normal levels once your engine has reached its normal operating temperature.

NOTE: Immediately following the installation of your exhaust system, you may experience a trace of smoke after initial start-up. DO NOT be alarmed. The smoke is caused by the burning of a small amount of forming oil residue used in the manufacturing process.

NOTE: It is strongly suggested that all clamps be checked and tightened after road testing the vehicle once the system has cooled.